

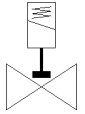
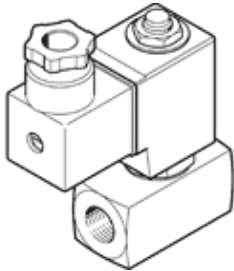
Solenoid valve

VZWD-L-M22C-M-N14-50-V-1P4-5

Part number: 1491885

FESTO

Directly actuated, NPT1/4" connection.



Data sheet

Feature	Value
Design structure	Directly actuated poppet valve
Type of actuation	electrical
Sealing principle	soft
Assembly position	Any
Mounting type	Line installation
Process valve connection	NPT1/4"
Electrical connection	Plug pattern type A to EN 175301-803 Plug to EN 175301-803 Cubic design
Nominal size	5 mm
Valve function	2/2 closed, monostable
Manual override	None
Flow direction	non reversible
Medium	Compressed air in accordance with ISO8573-1:2010 [7:4:4] Inert gases Mineral oil Water Neutral fluids Other media on request
Nominal pressure of process valve	100
Differential pressure	0 bar
Characteristic coil data	24 V DC: 11 W
Insulation class	H
Permissible voltage fluctuation	+/- 10 %
Duty cycle	100 %
Type of reset	mechanical spring
Type of piloting	direct
Medium pressure	0 ... 5 bar
Max. viscosity	22 mm ² /s
Medium temperature	-10 ... 80 °C
Ambient temperature	-10 ... 35 °C
Leak rate in accordance with EN 12266-1	A
Flow rate Kv	0.35 m ³ /h
Standard nominal flow rate	375 l/min
Switching time on	20 ms
Switching time off	18 ms
Materials note	Conforms to RoHS
PWIS conformity	VDMA24364 zone III
Material housing	Brass
Material number for housing	CW614N
Material seals	FPM
Product weight	600 g
Protection class	IP65
Corrosion resistance classification CRC	1 - Low corrosion stress