

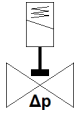
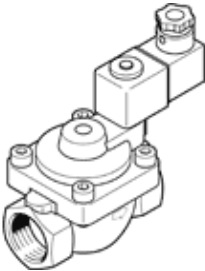
Solenoid valve

VZWP-L-M22C-G1-250-V-3AP4-40

Part number: 1489969

FESTO

Servo-controlled, with piston, G1" connection.



Data sheet

Feature	Value
Design structure	Pilot-actuated piston poppet valve
Type of actuation	electrical
Sealing principle	soft
Assembly position	Coil preferably on top
Mounting type	Line installation
Process valve connection	G1
Electrical connection	Plug pattern type A to EN 175301-803 Plug to EN 175301-803 Cubic design
Nominal size	25 mm
Valve function	2/2 closed, monostable
Manual override	None
Flow direction	non reversible
Medium	Compressed air in accordance with ISO8573-1:2010 [7:4:4] Inert gases Neutral fluids Other media on request
Nominal pressure of process valve	40
Differential pressure (MPa)	0.05 MPa
Differential pressure	0.5 bar
Differential pressure (psi)	7.25 psi
Characteristic coil data	230 V AC: 50/60 Hz, pick-up power 10.5 VA, holding power 7.6 VA
Insulation class	H
Permissible voltage fluctuation	+/- 10 %
Duty cycle	100 %
Type of piloting	Piloted
Pressure of medium	0.05 ... 4 MPa
Medium pressure	0.5 ... 40 bar
Pressure of medium psi	7.25 ... 580 psi
Max. viscosity	22 mm ² /s
Medium temperature	-10 ... 80 °C
Ambient temperature	-10 ... 35 °C
Leak rate in accordance with EN 12266-1	A
Flow rate Kv	11.5 m ³ /h
Standard nominal flow rate	12,250 l/min
Switching time on	130 ms
Switching time off	300 ms
Materials note	Conforms to RoHS
PWIS conformity	VDMA24364 zone III
Material housing	Cast brass
Material number for housing	CW617N
Material seals	FPM
Material screws	High alloy steel, non-corrosive

Feature	Value
Material number, screw	1.4301
Product weight	1,400 g
CE symbol (see declaration of conformity)	according to EU low voltage guideline
UKCA marking (see declaration of conformity)	To UK instructions for electrical equipment
Protection class	IP65
Corrosion resistance classification CRC	1 - Low corrosion stress