

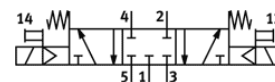
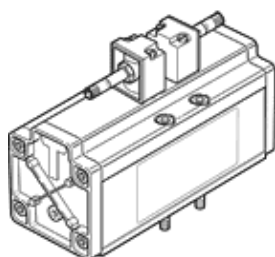
# Solenoid valve

## MDH-5/3G-3/4-D-4

Part number: 14546

FESTO

No pilot valve or manual override, no socket connector



## Data sheet

Feature	Value
Valve function	5/3 closed
Type of actuation	electrical
Width	76 mm
Standard nominal flow rate	4,800 l/min
Working pressure	3 ... 16 bar
Design structure	Piston slide
Type of reset	mechanical spring
Protection class	IP65
Nominal size	18 mm
Grid dimension	82 mm
Exhaust-air function	throttleable
Sealing principle	soft
Assembly position	Any
Conforms to standard	ISO 5599-1
Manual override	Pushing
ISO code	456
Type of piloting	Piloted
Pilot air supply	Internal
Flow direction	non reversible
Lap	Positive overlap
Switching time off	290 ms
Switching time on	85 ms
Operating medium	Compressed air in accordance with ISO8573-1:2010 [7:4:4]
Note on operating and pilot medium	Lubricated operation possible (subsequently required for further operation)
PWIS conformity	VDMA24364-B1/B2-L
Medium temperature	-10 ... 60 °C
Sound pressure level	85 dB(A)
Ambient temperature	-10 ... 50 °C
Product weight	2,600 g
Mounting type	On subbase With through-hole and screw
Pilot exhaust port 82	M5
Pilot exhaust port 84	M5
Pneumatic connection, port 1	Connection plate size 4 as per ISO 5599-1
Pneumatic connection, port 2	Connection plate size 4 as per ISO 5599-1
Pneumatic connection, port 3	Connection plate size 4 as per ISO 5599-1
Pneumatic connection, port 4	Connection plate size 4 as per ISO 5599-1
Pneumatic connection, port 5	Connection plate size 4 as per ISO 5599-1
Materials note	Conforms to RoHS
Material seals	NBR
Material housing	Aluminum