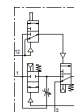
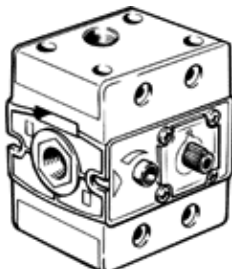


Pneumatic valve VLHE-3-1/4-B

Part number: 14330

FESTO

Normally closed, slow start-up valve, for use individually or in conjunction with S-series service units.



Data sheet

Feature	Value
Design structure	Poppet seat
Sealing principle	soft
Exhaust-air function	throttleable
Manual override	Pushing
Valve function	3/2 closed, monostable
Working pressure	2 ... 12 bar
Standard nominal flow rate	1,200 l/min
Switching time off	23 ms
Switching time on	8 ms
Materials note	Conforms to RoHS
Medium temperature	-10 ... 60 °C
Ambient temperature	-10 ... 60 °C
Mounting type	with through hole
Assembly position	Any
Pneumatic connection, port 1	G1/4
Pneumatic connection, port 2	G1/4
Pneumatic connection, port 3	G1/4
Nominal size	8 mm