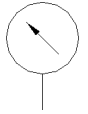
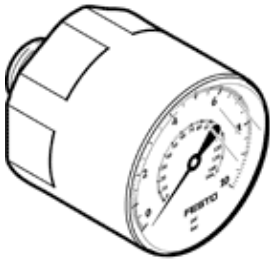


Pressure gauge MA-15-145-M5-PSI

Part number: 132341

FESTO

With display unit in psi.



Data sheet

Feature	Value
Display range	0 ... 145 psi
Nominal size of pressure gauge	15
Design structure	Bourdon tube pressure gauge without measuring mechanism
Mounting type	Line installation
Operating medium	Inert gases Neutral fluids
Operating pressure MPa	0 ... 1 MPa
Working pressure	0 ... 10 bar
Operating pressure	0 ... 145 psi
Alternating load factor	0.66
Measurement accuracy class	5
Protection class	IP53
Medium temperature	-20 ... 60 °C
Ambient temperature	-20 ... 60 °C
PWIS conformity	VDMA24364-B1/B2-L
Materials note	Conforms to RoHS
Position of connection	Rear side central
Pneumatic connection	M5
Material of threaded plug	Brass
Material housing	Steel
Material screen	PC
Housing color	Black
Product weight	10 g
Note on operating and pilot medium	No acetylene No oxygen