

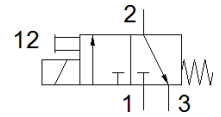
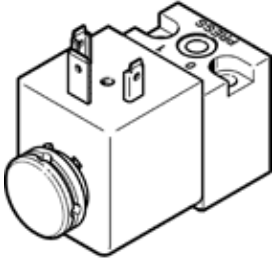
Pilot valve

MDH-3/2-110VAC

Part number: 119601

FESTO

Directly actuated, with solenoid coil and manual override, without plug socket.



Data sheet

Feature	Value
Valve function	3/2 closed, monostable
Type of actuation	electrical
Width	30 mm
Standard nominal flow rate	50 l/min
Operating pressure MPa	0.1 ... 1.6 MPa
Working pressure	1 ... 16 bar
Operating pressure	14.5 ... 232 psi
Design structure	Poppet seat
Type of reset	mechanical spring
CE symbol (see declaration of conformity)	according to EU low voltage guideline
UKCA marking (see declaration of conformity)	To UK instructions for electrical equipment
Protection class	IP65
Nominal size	1.3 mm
Grid dimension	42 mm
Exhaust-air function	not throttleable
Based on the standard	ISO 15218
Sealing principle	soft
Assembly position	Any
Conforms to standard	ISO 15218
Manual override	Pushing
Type of piloting	direct
Flow direction	non reversible
Lap	Underlap
Switching time off	9 ms
Switching time on	11 ms
Duty cycle	100 %
Characteristic coil data	110 V AC: 50 Hz, pickup power 14.5 VA, holding power 10.5 VA 110 V AC: 60 Hz, pick-up power 12.0 VA, holding power 7.6 VA
Permissible frequency fluctuation	+/- 10 %
Permissible voltage fluctuation	+/- 10 %
Operating medium	Compressed air in accordance with ISO8573-1:2010 [7:4:4]
Note on operating and pilot medium	Lubricated operation possible (subsequently required for further operation)
Corrosion resistance classification CRC	2 - Moderate corrosion stress
PWIS conformity	VDMA24364-B2-L
Medium temperature	-15 ... 80 °C
Ambient temperature	-15 ... 50 °C
Product weight	140 g
Electrical connection	Plug pattern type A to EN 175301-803 Per DIN EN 175301-803
Mounting type	On subbase with through hole
Pneumatic connection, port 1	Subbase
Pneumatic connection, port 2	Subbase
Pneumatic connection, port 3	Non-ducted
Materials note	Conforms to RoHS
Material seals	FPM