

# Hand slide valve W-3-1/2-NPT

Part number: 10417

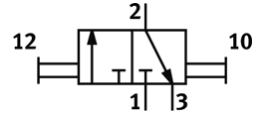
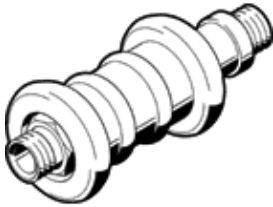
FESTO

3/2-way function, bistable

This product is only available if ordered from the Festo Corporation, USA.

This type is suitable for vacuum. Vacuum connection at port 1 (P).

Type to be discontinued. Available until 2012.



## Data sheet

Feature	Value
Pneumatic connection, port 1	NPT1/2-14
Pneumatic connection, port 2	NPT1/2-14
Actuating force	20 N