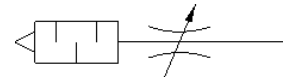


# Exhaust flow control valve GRE-1/2

Part number: 10353

FESTO

With sintered metal silencer.



## Data sheet

Feature	Value
Valve function	Flow control – silencer function
Pneumatic connection, port 1	G1/2
Adjusting element	Slotted head screw
Mounting type	Threaded
Standard nominal flow rate in flow control direction	3,600 l/min
Standard flow rate 0.6->0 MPa (6->0 bar, 87->0 psi)	0 ... 4,300 l/min
Working pressure	0 ... 10 bar
Ambient temperature	-10 ... 70 °C
Assembly position	Any
Operating medium	Compressed air in accordance with ISO8573-1:2010 [7:::]
Note on operating and pilot medium	Lubricated operation possible (subsequently required for further operation)
PWIS conformity	VDMA24364-B1/B2-L
Medium temperature	-10 ... 70 °C
Product weight	75 g
Material of threaded plug	Wrought Aluminum alloy
Materials note	Conforms to RoHS
Material seals	NBR
Material adjusting screw	Brass