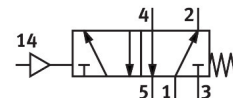


# Pneumatic valve VL-5-1/8

Part number: 9764

**FESTO**



## Data sheet

Feature	Value
Valve function	5/2-way, monostable
Type of actuation	Pneumatic
Construction width	26 mm
Standard nominal flow rate (standardised to DIN 1343)	500 l/min
pneumatic working port	G1/8
Operating pressure	0 MPa...1 MPa 0 bar...10 bar
Design	Poppet seat
Type of reset	Mechanical spring
Nominal size	5 mm
Grid dimension	27 mm
Exhaust-air function	With flow control option
Sealing principle	Soft
Mounting position	optional
Type of piloting	Direct
Pilot air supply	External
Flow direction	Non-reversible
lap	Underlap
Pilot pressure	0.12 MPa...1 MPa 1.2 bar...10 bar
Max. switching frequency	12 Hz
Switching time off	16 ms
Switching time on	5 ms
Operating medium	Compressed air to ISO 8573-1:2010 [7:4:4]
Note on operating and pilot medium	Lubricated operation possible (in which case lubricated operation will always be required)
Corrosion resistance class CRC	1 - Low corrosion stress
LABS (PWIS) conformity	VDMA24364-B1/B2-L
Storage temperature	-20 °C...60 °C
Media temperature	-10 °C...60 °C
Pilot medium	Compressed air to ISO 8573-1:2010 [7:4:4]
Ambient temperature	-10 °C...60 °C

Feature	Value
Product weight	220 g
Type of mounting	On PR rail With through-hole Either:
Pilot air port 12	G1/8
Pilot air port 14	G1/8
Pneumatic connection, port 1	G1/8
Pneumatic connection, port 2	G1/8
Pneumatic connection, port 3	G1/8
Pneumatic connection, port 4	G1/8
Pneumatic connection, port 5	G1/8
Note on materials	RoHS-compliant
Material seals	NBR TPE-U(PU)
Material housing	Die-cast aluminium