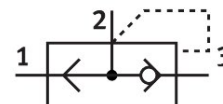


Quick exhaust valve SE-1/8-B

Part number: 9685

FESTO



Data sheet

Feature	Value
Valve function	Quick exhaust
Selection of additional functions	With silencer
Pneumatic connection, port 1	G1/8
Pneumatic connection, port 2	G1/8
Type of mounting	Screw-in
Standard nominal flow rate, exhaust 0.6->0.5 MPa (6->5 bar, 87->72.5 psi)	660 l/min
Standard nominal flow rate, air flow 0.6->0.5 MPa (6->5 bar, 87->72.5 psi)	300 l/min
Operating pressure	0.5 bar...10 bar
Ambient temperature	-20 °C...75 °C
Material housing	Die-cast zinc
Operating medium	Compressed air to ISO 8573-1:2010 [7:4:4]
Nominal size	5 mm
Mounting position	optional
Note on operating and pilot medium	Lubricated operation possible (in which case lubricated operation will always be required)
LABS (PWIS) conformity	VDMA24364-B1/B2-L
Media temperature	-20 °C...75 °C
Sound pressure level	100 dB(A)
Product weight	75 g
Pneumatic connection, port 3	G1/8
Material seals	NBR