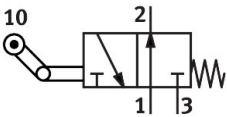


Toggle lever valve with idle return LO-3-1/4-B

Part number: 8989



Data sheet

| Feature | Value |
|---|---------------------------|
| Valve function | 3/2 open, single solenoid |
| Type of actuation | Mechanical |
| Standard nominal flow rate (standardised to DIN 1343) | 600 l/min |
| pneumatic working port | G1/4 |
| Operating pressure | -0.95 bar...10 bar |
| Design | Poppet seat |
| Nominal size | 7 mm |
| Type of piloting | Direct |
| LABS (PWIS) conformity | VDMA24364-B1/B2-L |
| Ambient temperature | -10 °C...60 °C |
| Actuating force | 50 N |
| Product weight | 250 g |
| Type of mounting | With through-hole |
| Pneumatic connection, port 1 | G1/4 |
| Pneumatic connection, port 2 | G1/4 |
| Pneumatic connection, port 3 | G1/4 |
| Material seals | NBR |
| Material housing | Die-cast aluminium |