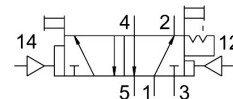


Pneumatic valve

JDH-5-1/8

Part number: 8824

FESTO



Data sheet

Feature	Value
Valve function	5/2-way, bistable, dominant
Type of actuation	Pneumatic
Construction width	26 mm
Standard nominal flow rate (standardised to DIN 1343)	600 l/min
pneumatic working port	G1/8
Operating pressure	0 MPa...1 MPa 0 bar...10 bar
Design	Poppet seat
Nominal size	5 mm
Grid dimension	27 mm
Exhaust-air function	With flow control option
Sealing principle	Soft
Mounting position	optional
Type of piloting	Direct
Pilot air supply	External
Flow direction	Non-reversible
lap	Underlap
Pilot pressure	0.23 MPa...1 MPa 2.3 bar...10 bar
Max. switching frequency	12 Hz
Switching time off	16 ms
Switching time on	9 ms
Switching time reversal	7 ms
Operating medium	Compressed air to ISO 8573-1:2010 [7:4:4]
Note on operating and pilot medium	Lubricated operation possible (in which case lubricated operation will always be required)
Corrosion resistance class CRC	1 - Low corrosion stress
LABS (PWIS) conformity	VDMA24364-B1/B2-L
Storage temperature	-20 °C...60 °C
Media temperature	-10 °C...60 °C
Ambient temperature	-10 °C...60 °C
Product weight	330 g

Feature	Value
Type of mounting	Either: On manifold rail With through-hole
Pilot air port 12	G1/8
Pilot air port 14	G1/8
Pneumatic connection, port 1	G1/8
Pneumatic connection, port 2	G1/8
Pneumatic connection, port 3	G1/8
Pneumatic connection, port 4	G1/8
Pneumatic connection, port 5	G1/8
Note on materials	RoHS-compliant
Material seals	NBR TPE-U(PU)
Material housing	Die-cast aluminium