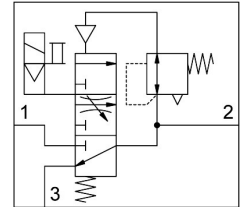
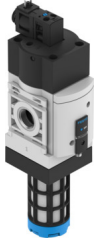


# Soft-start/quick exhaust valve MS6-EDE-1/2-V24-AD7-B

Part number: 8201358

**FESTO**



## Data sheet

Feature	Value
Size	6
Grid dimension	62 mm
Exhaust-air function	Without flow control option
Type of actuation	Electric
Mounting position	optional
Selection of additional functions	With silencer
Series	MS
Manual override	Detenting Non-detenting
Design	Poppet valve, electrically actuated
Type of reset	Mechanical spring
Type of piloting	Pilot actuated
Pilot air supply	Internal
Valve function	3/2-way, closed, monostable
lap	Underlap
Pressure gauge (ANALOG) or Pressure display (DIGITAL)	With pressure sensor with LCD display
Switching position indicator	With accessories
Operating pressure	0.3 MPa...0.7 MPa 3 bar...7 bar
b value	0.46
C value	23.9 l/sbar
Standard nominal flow rate, exhaust 0.6->0 MPa (6->0 bar, 87->0 psi)	4000 l/min
Standard nominal flow rate (standardised to DIN 1343)	5000 l/min
Switch-on time	31 ms
Characteristic coil data	24 V DC: 2.3 W
Permissible voltage fluctuations	+/- 10 %
Operating medium	Compressed air to ISO 8573-1:2010 [7:4:4]
Note on operating and pilot medium	Lubricated operation possible (in which case lubricated operation will always be required)
Corrosion resistance class CRC	1 - Low corrosion stress
LABS (PWIS) conformity	VDMA24364-B1/B2-L

Feature	Value
Cleanroom class	Class 7 according to ISO 14644-1
Storage temperature	-10 °C...60 °C
Media temperature	0 °C...50 °C
Degree of protection	IP65
Ambient temperature	0 °C...50 °C
Product weight	499 g
Electrical connection	Type C To EN 175301-803
Signal status display	With accessories
Type of mounting	Via wall/surface bracket
Pneumatic connection, port 1	G1/2
Pneumatic connection, port 2	G1/2
Pneumatic connection, port 3	G1/2
Note on materials	RoHS-compliant
Material seals	HNBR NBR
Material housing	PA-reinforced