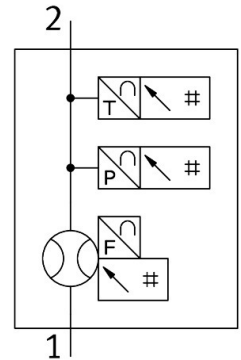


Flow sensor

SFAM-62-3000L-TG12-PNLK-PNVBA-M12-EMD

Part number: 8187365

FESTO



Data sheet

Feature	Value
Approval	RCM trademark
CE mark (see declaration of conformity)	To EU EMC Directive In accordance with EU RoHS Directive
UKCA marking (see declaration of conformity)	To UK instructions for EMC To UK RoHS instructions
Note on materials	RoHS-compliant
Flow direction	Unidirectional From left to right
Start value for pressure measuring range	0 MPa 0 bar 0 psi
End value for pressure measuring range	1.6 MPa 16 bar 232 psi
Start value for flow rate measuring range	30 l/min
End value for flow rate measuring range	3000 l/min
Temperature measurement start value	0 °C
Temperature measurement end value	50 °C
Operating pressure	1.6 MPa 16 bar 232 psi
Overload pressure	2 MPa 20 bar 290 psi
Operating medium	Argon Compressed air to ISO 8573-1:2010 [7:4:4] Carbon dioxide Nitrogen
Media temperature	0 °C...50 °C
Ambient temperature	0 °C...50 °C

Feature	Value
Nominal temperature	23 °C
Accuracy of pressure value in ± %FS	1.5 %FS
Accuracy of flow rate	± (3% o.m.v. + 0.3% FS)
Accuracy temperature in ± °C	5 °C
Repetition accuracy of pressure value in ± %FS	0.3 %FS
Repetition accuracy offset in ± %FS	0.2 %FS
Repetition accuracy span in ± %FS	0.8 %FS
Temperature coefficient in ± %FS/K	0.05 %FS/K
Temperature coefficient span in ± %FS/K	Typ. 0.1%FS/K
Pressure influence span in ± %FS/bar	0.5 %FS/b.
Flow characteristic curve start value	0 l/min
Flow characteristic curve end value	3000 l/min
Temperature characteristic curve start value	0 °C
Temperature characteristic curve end value	100 °C
Output characteristic curve start value	0 V
Output characteristic curve end value	10 V 20 mA
Output characteristic curve starting value	4 mA
Max. load resistance current output	500 Ohm
Min. load resistance voltage output	20 kOhm
Short circuit current rating	yes
Overload protection	Available
Protocol	IO-Link®
IO-Link, revision ID	V1.1
IO-Link, device profile	Firmware update Function locator Function Product URI Function Quantity detection Identification and diagnostics Smart sensor - SSP 4.1.3
IO-Link, transmission rate	COM3
IO-Link, SIO-Mode support	Yes
IO-Link, port type	Class A
IO-Link, process data length output	0 bit
IO-Link, process data length input	96 bit
IO-Link, Process data content IN	Current operating status 4 bit Monitoring the pressure drop at peak flow 1 bit SSC Monitoring the pressure drop at medium flow rate 1 bit SSC Monitoring the pressure stability in active operating status 1 bit SSC Monitoring the pressure stability in passive operating status 1 bit SSC Monitoring the average flow rate 1 bit SSC Reference record unusable 1 bit Monitoring the peak flow rate 1 bit SSC Time monitoring of the active-static operating status 1 bit SSC
IO-Link, Service data IN	Volume/mass measured value 32 bit Pneumatic energy measurement 32 bit Pneumatic power measurement 32 bit
IO-Link, minimum cycle time	1.5 ms
IO-Link, Data storage required	1 KB
Operational voltage range DC	18 V...30 V
Reverse polarity protection	For all electrical connections
Electrical connection 1, connection type	Plugs
Electrical connection 1, connector system	M12x1, A-coded to EN 61076-2-101
Electrical connection 1, number of connections/cores	5
Electrical connection 1, type of mounting	Screw-type lock
Max. cable length	20 m with IO-Link® operation 30 m
Type of mounting	In-line installation

Feature	Value
Mounting position	optional
Pneumatic connection	G1/2
Product weight	600 g
Material housing	Die-cast aluminium PA-reinforced
Display type	Illuminated LCD, multi-colour
Degree of protection	IP65
Corrosion resistance class CRC	2 - Moderate corrosion stress
LABS (PWIS) conformity	VDMA24364-B1/B2-L