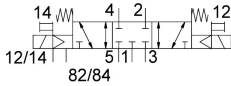
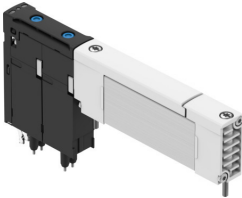


Solenoid valve

VUVX-BK10-P53C-MZH-F-1T1L

Part number: 8187066

FESTO



Data sheet

Feature	Value
Valve function	5/3 closed
Type of actuation	Electric
Valve size	10 mm
Nominal flow rate standardised according to ISO 8778	510 l/min
Operating voltage	24V DC
Operating pressure	-0.09 MPa...0.7 MPa -0.9 bar...7 bar
Design	Piston slide with sealing ring
Type of reset	Mechanical spring
Degree of protection	IP65
Width	10.35 mm
Nominal size	3.5 mm
Exhaust-air function	With flow control option
Sealing principle	Soft
Mounting position	optional
Manual override	Non-detenting
Type of piloting	Pilot actuated
Pilot air supply	External
Flow direction	Reversible
lap	Overlap
Signal status display	yes
Pilot pressure	0.25 MPa...0.7 MPa 2.5 bar...7 bar
Suitability for vacuum	yes
b value	0.4
C value	1.88 l/sbar
Nominal flow rate standardised to ISO 8778 exhaust 2-3	465 l/min
Max. switching frequency	3 Hz
Switching time off	48 ms
Switching time on	10 ms
Duty cycle	100%
Max. positive test pulse with 0 signal	1400 µs

Feature	Value
Max. negative test pulse with 1 signal	800 µs
Characteristic coil data	24 V DC: 0.35 W
Permissible voltage fluctuations	+/- 10 %
Operating medium	Compressed air to ISO 8573-1:2010 [7:4:4] Inert gases
Note on operating and pilot medium	Ester oil < 0.1mg/m³, according to ISO 8573-1:2010 [---:2] Lubricated operation possible (in which case lubricated operation will always be required)
Vibration resistance	Transport application test with severity level 2 to FN 942017-4 and EN 60068-2-6
Shock resistance	Shock test with severity level 1 to FN 942017-5 and EN 60068-2-27
Corrosion resistance class CRC	1 - Low corrosion stress
LABS (PWIS) conformity	VDMA24364 zone III
Storage temperature	-20 °C...70 °C
Suitable for use with food	See supplementary material information
Media temperature	-5 °C...50 °C
Relative air humidity	5 - 95%
Pilot medium	Compressed air to ISO 8573-1:2010 [7:4:4] Inert gases
Ambient temperature	-5 °C...50 °C
Max. tightening torque for valve mounting	0.375 Nm
Product weight	53.2 g
Electrical connection	Plug-in
Type of mounting	On sub-base
Pilot air port 12/14	Sub-base
Pilot exhaust port 82/84	Sub-base
Pilot air port 12	Sub-base
Pneumatic connection, port 1	Sub-base
Pneumatic connection, port 2	Sub-base
Pneumatic connection, port 3	Sub-base
Pneumatic connection, port 4	Sub-base
Pneumatic connection, port 5	Sub-base
Pneumatic port 82	Sub-base
Note on materials	RoHS-compliant
Material seals	HNBR
Material dynamic seals	HNBR
Material housing	Anodised wrought aluminium alloy
Material spring	High-alloy stainless steel
Material piston slide	POM
Material screws	Stainless steel