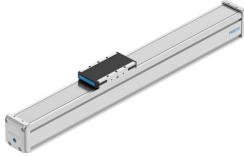


# Guide axis ELFD-KF-60- -

Part number: 8182487

FESTO



## Data sheet

Feature	Value
Working stroke	50 mm...8500 mm
Size	60
Stroke reserve	4.5 mm
Mounting position	optional
Guide	Recirculating ball bearing guide
Design	Guidance
Max. acceleration	50 m/s <sup>2</sup>
Max. speed	3 m/s
Duty cycle	100%
Corrosion resistance class CRC	0 - No corrosion stress
LABS (PWIS) conformity	VDMA24364 zone III
Suitability for the production of Li-ion batteries	Product corresponds to the internal product definition from Festo for use in battery production:Metals with more than 1% by mass of copper, zinc or nickel are excluded from use.The exceptions are nickel in steel, chemically nickel-plated surfaces, printed circuit boards, cables, electrical plug connectors and coils
Degree of protection	IP40
Ambient temperature	0 °C...60 °C
2nd moment of area Iy	485200 mm <sup>4</sup>
2nd moment of area Iz	730600 mm <sup>4</sup>
Max. force Fy	2200 N...4400 N
Max. force Fz	2200 N...4400 N
Max. moment Mx	38 Nm...75 Nm
Max. moment My	42 Nm...390 Nm
Max. moment Mz	15 Nm...140 Nm
Max. force Fy total axis	1513 N...3026 N
Max. force Fz total axis	3000 N...3200 N
Max. moment Mx total axis	68 Nm...119 Nm
Max. moment My total axis	40 Nm...128 Nm
Max. moment Mz total axis	50 Nm...133 Nm
Torsional mass moment of inertia It	192900 mm <sup>4</sup>
Displacement force	6 N

Feature	Value
Reference service life	5000 km
Fy at theoretical life value of 100 km (only guide consideration)	9208 N...18415 N
Fz at theoretical life value of 100 km (only guide consideration)	9208 N...18415 N
Mx at theoretical life value of 100 km (only guide consideration)	157 Nm...314 Nm
My at theoretical life value of 100 km (only guide consideration)	60 Nm...500 Nm
Mz at theoretical life value of 100 km (only guide consideration)	60 Nm...500 Nm
Moving mass	419 g...643 g
Basic weight for 0 mm stroke	1261 g...1683 g
Additional weight per 10 mm stroke	49 g
Material end cap	Aluminium gravity die-cast, painted
Material profile	Anodised wrought aluminium alloy
Note on materials	RoHS-compliant
Material cover tape	High-alloy stainless steel
Material cover	Aluminium gravity die-cast, painted
Material guide slide	Steel
Material guide rail	Steel
Material slide	Wrought aluminium alloy