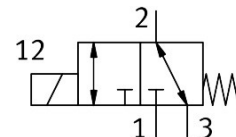


Media separated solenoid valve VYKC-F16-M22C-16-PE-H2R

Part number: 8172715

FESTO



Data sheet

| Feature | Value |
|---|---|
| Design | Electrical connection at the side Rocker valve with diaphragm seal |
| Sealing principle | Soft |
| Material in contact with the medium | EPDM PEEK |
| Suitable for use with food | See supplementary material information |
| Valve function | 2/2-way, closed, monostable |
| Nominal size | 1.6 mm |
| Flow direction | Reversible |
| Type of actuation | Electric |
| Type of piloting | Direct |
| Type of reset | Mechanical spring |
| Manual override | None |
| Mounting position | optional |
| Type of mounting | With through-hole for M2.5 screw |
| Electrical connection 1, connection type | Cable with plug |
| Electrical connection 1, connector system | Connection pattern H |
| Size | 16 |
| Grid dimension | 17 mm |
| Fluid connection | Flange |
| Medium | Liquid media Gaseous media |
| Note on the medium | Observe resistance of materials that come into contact with the media Maximum particle size 5 µm |
| Internal volume | 108 µl valve with fluid connections 89 µl fluid chamber valve |
| Media temperature | 10 °C...50 °C |
| Media temperature for fluids | 10 °C...50 °C |
| Ambient temperature | 10 °C...50 °C |
| Storage temperature | -20 °C...70 °C |
| Medium pressure | -0.075 MPa...0.3 MPa -0.75 bar...3 bar -10.875 psi...43.5 psi |

| Feature | Value |
|---|---|
| Burst pressure | 2 MPa 20 bar 290 psi |
| Total leakage | 4 ml/h |
| Operational voltage range DC | 12 V...24 V |
| Permissible voltage fluctuations | +/- 10 % |
| Information on power consumption | Low-current phase 1.4 W, high-current phase 5.5 W for 100 ms |
| Characteristic coil data | 12 - 24 V DC: low-current phase 1.4 W, high-current phase 5.5 W |
| Insulation material class | B |
| Duty cycle | 100% in conjunction with holding current reduction Observe the notes on operating the solenoid valves. |
| Max. switching frequency | 4 Hz |
| Note on switching frequency | Dependent on the ambient temperature and installation state |
| Switch-on time for fluids | 14 ms |
| Switching time on gaseous media | 12 ms |
| Standard nominal flow rate (standardised to DIN 1343) | 53 l/min |
| Note on standard nominal flow rate | In case of a pressure drop of 1 -> 0 bar (gaseous media) |
| Flow rate Kv | 0.046 m³/h 0.77 l/min |
| Note on flow rate Kv | For medium water Pressure difference 1 bar |
| Water flow rate at max. operating pressure | 0.08 m³/h 1.3 l/min |
| Material housing | PEEK |
| Material membrane | EPDM |
| Material seals | EPDM |
| Note on materials | RoHS-compliant |
| LABS (PWIS) conformity | VDMA24364 zone III |
| Product weight | 50 g |
| Degree of protection | IP40 |
| Note on degree of protection | In assembled state |
| Instructions on use | For indoor use only |
| Corrosion resistance class CRC | 0 - No corrosion stress |
| Approval | RCM trademark |
| CE mark (see declaration of conformity) | To EU EMC Directive In accordance with EU RoHS Directive |
| UKCA marking (see declaration of conformity) | To UK instructions for EMC To UK RoHS instructions |