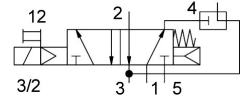
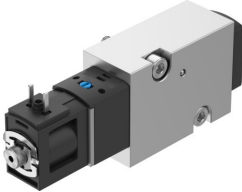


Solenoid valve VSNC-FK-M32C-RD-G18-1C1-S

Part number: 8166611

FESTO



Data sheet

Feature	Value
Valve function	3/2-way, closed, monostable
Type of actuation	Electric
Construction width	25.5 mm
Standard nominal flow rate (standardised to DIN 1343)	400 l/min
pneumatic working port	NAMUR port pattern
Operating voltage	24V DC
Operating pressure	0.25 MPa...0.8 MPa 2.5 bar...8 bar
Design	Piston slide with sealing ring
Type of reset	Mechanical spring Pneumatic spring
Degree of protection	IP65
Exhaust-air function	With flow control option
Sealing principle	Soft
Mounting position	optional
Conforms to standard	VDI/VDE 3845 (NAMUR)
Manual override	Detenting
Type of piloting	Pilot actuated
Pilot air supply	Internal
Flow direction	Non-reversible
lap	Overlap
b value	0.3
C value	2.1 l/sbar
Standard nominal flow rate, exhaust return 4->3	100 l/min
Switching time off	50 ms
Switching time on	50 ms
Duty cycle	100%
Characteristic coil data	24 V DC: 2.4 W
Operating medium	Compressed air to ISO 8573-1:2010 [7:4:4]
Note on operating and pilot medium	Lubricated operation possible (in which case lubricated operation will always be required)
Corrosion resistance class CRC	1 - Low corrosion stress

Feature	Value
LABS (PWIS) conformity	VDMA24364 zone III
Storage temperature	-20 °C...60 °C
Media temperature	-20 °C...50 °C
Ambient temperature	-20 °C...50 °C
Product weight	220 g
Electrical connection	Type C
Type of mounting	With through-hole
Breather connection	Not ducted
Pneumatic connection, port 1	G1/8
Pneumatic connection, port 2	NAMUR port pattern
Pneumatic connection, port 3	G1/8
Pneumatic connection, port 4	NAMUR port pattern
Pneumatic connection, port 5	G1/8
Note on materials	RoHS-compliant
Material cover	PA-reinforced
Material seals	NBR
Material housing	Wrought aluminium alloy
Manual override material	PA-reinforced
Material piston	Wrought aluminium alloy
Material screws	High-alloy stainless steel