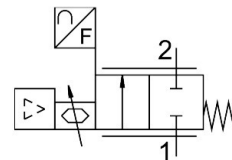


Proportional flow control valve VEMD-L-6-60-100-D9-G14-5YMPM1D-VA

Part number: 8163829

FESTO



Data sheet

| Feature | Value |
|---|--|
| Size | 100 |
| Degree of protection | IP40 |
| Standard nominal flow rate (standardised to DIN 1343) | 100 l/min |
| Flow rate control range | 2 l/min...100 l/min |
| Flow direction | Non-reversible |
| Nominal operating pressure | 0.3 MPa 43.5 psi |
| Operating pressure | 0.1 MPa...0.6 MPa 1 bar...6 bar |
| Overload pressure | 0.8 MPa 8 bar 116 psi |
| Burst pressure | 1.8 MPa 18 bar 261 psi |
| Accuracy of flow rate | ± (2% o.m.v. + 1% FS) |
| Repetition accuracy of flow rate | ± (0.25% o.m.v. + 0.25% FS) |
| Valve function | 2-way proportional flow control valve |
| Nominal size | 6 mm |
| Type of actuation | Electric |
| Pneumatic connection, port 1 | Female thread G1/4 |
| Pneumatic connection, port 2 | Female thread G1/4 |
| Medium | Argon Compressed air as per ISO 8573-1:2010 [5:3:1] Carbon dioxide Oxygen Nitrogen |
| Note on the medium | Lubricated operation not possible |
| Environmental conditions | Not suitable for use in an environment enriched with oxygen to IEC 60601-1 Cleanest possible ambient air Dry |
| Nominal altitude of use | ≤ 2000 m ASL (> 79.5 kPa) |
| Max. installation height | 2000 m |

| Feature | Value |
|--|---|
| Operating medium | Argon Compressed air as per ISO 8573-1:2010 [5:3:1] Carbon dioxide Oxygen Nitrogen |
| Note on operating and pilot medium | Lubricated operation not possible Maximum particle size 10 µm |
| Relative air humidity | 0 - 90% Non-condensing |
| Pressure dew point | -20 °C |
| Duty cycle | 100% |
| Media temperature | 5 °C...40 °C |
| Ambient temperature | 5 °C...40 °C |
| Storage temperature | -20 °C...70 °C |
| Nominal operating voltage DC | 24 V |
| Operational voltage range DC | 12 V...24 V |
| Max. electrical power consumption | 8.5 W |
| Setpoint value | 4 - 20 mA 0 - 10 V 1 - 5 V Modbus® |
| Diagnostic function | Display via LED |
| Display type | LED TFT colour |
| Signal range analogue input | 0 - 5 V 0 - 10 V 0 - 20 mA |
| Signal range analogue output | 0 - 10 V 1 - 5 V 4 - 20 mA |
| Reverse polarity protection | For operating voltage connections |
| Product weight | 630 g |
| Material in contact with the medium | Anodised wrought aluminium alloy EPDM Epoxy FPM PA-reinforced Silicon Silicon nitride High-alloy stainless steel |
| Material seals | EPDM |
| Material housing | Anodised aluminium PA-reinforced PC |
| Note on materials | RoHS-compliant |
| Dimensions (W x L x H) | 116 mm x 38 mm x 124 mm |
| Type of mounting | Direct mounting via through-hole Mounting plate, attached with screws On H-rail via accessories Screw-clamped Via through-hole for M4 screw |
| Mounting position | optional |
| Approval | C-Tick |
| Conforms to standard | IEC 61010-1 |
| KC mark | KC-EMV |
| CE mark (see declaration of conformity) | To EU EMC Directive In accordance with EU RoHS Directive |
| UKCA marking (see declaration of conformity) | To UK instructions for EMC To UK RoHS instructions |
| LABS (PWIS) conformity | VDMA24364 zone III |

| Feature | Value |
|--|---|
| Oxygen suitability according to standard | ASTM G 63 ASTM G 93 ASTM G 94 CGA G 4.1 EIGA IGC 33/06/E ISO 15001 |