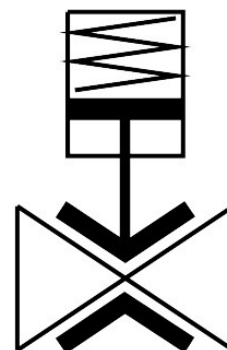


Pinch valve
VZQA-C-M22C-25-S5S5-V2V4S1-2
 Part number: 8159104

FESTO



Data sheet

Feature	Value
Design	Pinch valve, pneumatically actuated
Type of actuation	Pneumatic
Sealing principle	Soft
Mounting position	optional
Type of mounting	In-line installation
Connection Process valve	Clamp to DIN 32676 series A
Nominal size DN	25
Valve function	2/2-way, closed, monostable
Flow direction	Reversible
Medium pressure	0 MPa...0.2 MPa 0 bar...2 bar 0 psi...29 psi
Note on the medium pressure	Use in the vacuum range was tested up to -0.09 MPa with the air at room temperature. Depending on the application, a counter-vacuum may have to be created on the control side to guarantee the media flow.
Operating pressure	0.35 MPa...0.6 MPa 3.5 bar...6 bar 50.75 psi...87 psi
Nominal pressure PN	10
Burst pressure	1.6 MPa 16 bar 232 psi
Type of reset	Mechanical spring
Type of piloting	Externally controlled
Auxiliary pilot air port 12	M5
Pilot medium	Compressed air to ISO 8573-1:2010 [7:4:1]
Medium	Compressed air to ISO 8573-1:2010 [:-:1] Water
Max. viscosity	4000 mm ² /s

Feature	Value
Media temperature	-5 °C...100 °C
Ambient temperature	-5 °C...60 °C
Storage temperature	5 °C...30 °C
Flow rate Kv	18 m³/h
Switching time on	250 ms
Switching time off	400 ms
Note on materials	RoHS-compliant
LABS (PWIS) conformity	VDMA24364 zone III
Material housing	High-alloy stainless steel
Material number housing	1.4301
Material housing cover	High-alloy stainless steel
Material number housing cover	1.4404 / AISI 316L
Material seals	FPM
Material shut-off element	VMQ (silicone)
Product weight	2354 g
Suitable for use with food	See declaration of conformity
Material bowl	PPS