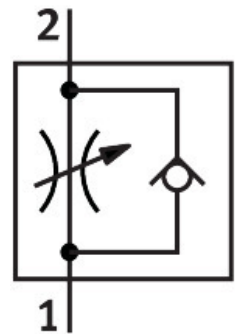


# One-way flow control valve VFOE-LS-T-M5-Q6-F1A

Part number: 8157629

**FESTO**



## Data sheet

| Feature   | Value  |
|---|--|
| Valve function  | Supply air one-way flow control function   |
| Pneumatic connection, port 1  | QS-6   |
| Pneumatic connection, port 2  | M5   |
| Type of actuation   | Manual   |
| Adjustment component  | Rotary knob with detent  |
| Type of mounting  | Screw-in   |
| Standard nominal flow rate in flow control direction                          | 100 l/min  |
| Standard nominal flow rate in blocked direction                               | 60 l/min...100 l/min   |
| Ambient temperature   | -10 °C...60 °C   |
| Material housing  | PBT  |
| Explosion protection  | The information in the certificate must be observed!<br>Zone 1 (ATEX)<br>Zone 2 (ATEX)<br>Zone 21 (ATEX)<br>Zone 22 (ATEX)   |
| Mounting position   | optional   |
| Width across flats  | 9 mm   |
| Rotatability  | 360°/no continuous swivelling permissible  |
| Variants  | Metals with copper, zinc or nickel by mass as main constituent are excluded from use. Exceptions are nickel in steel, chemically nickel-plated surfaces, printed circuit boards, cables, electrical plug connectors and coils. |
| Operating pressure complete temperature range                                 | 0.02 MPa...1 MPa<br>0.2 bar...10 bar<br>2.9 psi...145 psi  |
| Standard flow rate in flow control direction 0.6->0 MPa (6->0 bar, 87->0 psi) | 165 l/min  |
| Standard flow rate in non-return direction 0.6->0 MPa (6->0 bar, 87->0 psi)   | 150 l/min...180 l/min  |

| Feature  | Value  |
|--|--|
| Operating medium                                   | Compressed air to ISO 8573-1:2010 [7:4:4]  |
| Note on operating and pilot medium                 | Lubricated operation possible (in which case lubricated operation will always be required)   |
| LABS (PWIS) conformity                             | VDMA24364 zone III   |
| Suitability for the production of Li-ion batteries | Product corresponds to the internal product definition from Festo for use in battery production:Metals with more than 1% by mass of copper, zinc or nickel are excluded from use.The exceptions are nickel in steel, chemically nickel-plated surfaces, printed circuit boards, cables, electrical plug connectors and coils |
| Cleanroom class                                    | Class 4 according to ISO 14644-1   |
| Media temperature                                  | -10 °C...60 °C   |
| Max. tightening torque                             | 2.4 Nm   |
| Nominal torque                                     | 2 Nm   |
| Tolerance for nominal tightening torque            | ± 20%  |
| Product weight                                     | 3.3 g  |
| Note on materials                                  | RoHS-compliant   |
| Material cover                                     | PBT  |
| Material dynamic seals                             | HNBR   |
| Material threaded bolt                             | Steel, chemically nickel-plated  |
| Material release ring                              | PBT  |
| Material static seals                              | NBR  |