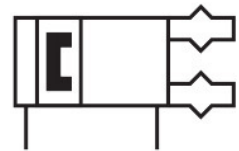
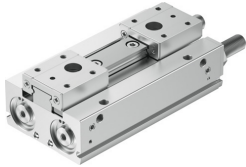


Parallel gripper HPPF-20-40-A-S

Part number: 8143426

FESTO



Data sheet

| Feature | Value |
|--|--|
| Size | 20 |
| Total stroke | 40 mm |
| Stroke per gripper jaws | 20 mm |
| Max. angular gripper jaw backlash ax, ay | 0 deg |
| Max. gripper jaw backlash Sz | 0 mm |
| Repetition accuracy, gripper | 0.06 mm |
| Number of gripper jaws | 2 |
| Drive system | Pneumatic |
| Mounting position | optional |
| Mode of operation | Double-acting |
| Cushioning | Elastic cushioning rings/plates at both ends |
| Gripper function | Parallel |
| Gripper force back-up | None |
| Design | Flat mounting method for gripper fingers Rack and pinion Force pilot operated motion sequence |
| Guide | Ball guide |
| Position detection | Via proximity switch |
| Variants | Metals with copper, zinc or nickel by mass as main constituent are excluded from use. Exceptions are nickel in steel, chemically nickel-plated surfaces, printed circuit boards, cables, electrical plug connectors and coils. |
| Operating pressure | 0.1 MPa...0.7 MPa 1 bar...7 bar 14.5 psi...101.5 psi |
| Max. operating frequency of gripper | 1 Hz |
| Min. opening time at 0.6 MPa (6 bar, 87 psi) | 120 ms |
| Min. closing time at 0.6 MPa (6 bar, 87 psi) | 110 ms |
| Operating medium | Compressed air to ISO 8573-1:2010 [7:4:4] |
| Note on operating and pilot medium | Lubricated operation possible (in which case lubricated operation will always be required) |
| Corrosion resistance class CRC | 0 - No corrosion stress |
| LABS (PWIS) conformity | VDMA24364 zone III |

| Feature | Value |
|---|--|
| Suitability for the production of Li-ion batteries | Product corresponds to the internal product definition from Festo for use in battery production: Metals with more than 1% by mass of copper, zinc or nickel are excluded from use. The exceptions are nickel in steel, chemically nickel-plated surfaces, printed circuit boards, cables, electrical plug connectors and coils |
| Cleanroom class | Class 7 according to ISO 14644-1 |
| Ambient temperature | -10 °C...60 °C |
| Total gripping force, opening, 0.6MPa (6bar, 87 psi) | 346.6 N |
| Total gripping force, closing, 0.6MPa (6bar, 87 psi) | 346.6 N |
| Gripper force per gripper jaw, opening, 0.6 MPa (6 bar, 87 psi) | 173.3 N |
| Gripper force per gripper jaw, closing, 0.6 MPa (6 bar, 87 psi) | 173.3 N |
| Max. force on gripper jaw Fz static | 320 N |
| Max. moment Mx | 6 Nm |
| Max. moment My | 3 Nm |
| Max. moment Mz | 3 Nm |
| Product weight | 993 g |
| Type of mounting | Direct mounting via through-hole Direct mounting via thread |
| Pneumatic connection | M5 |
| Note on materials | RoHS-compliant |
| Material cover cap | Wrought aluminium alloy, anodised |
| Material cover | Anodised wrought aluminium alloy |
| Material end plate | High-alloy stainless steel |
| Material housing | Anodised wrought aluminium alloy |
| Material gripper jaws | High-alloy steel |
| Material piston seal | TPE-U(PU) |
| Material o-ring | NBR |
| Material screws | Coated steel |
| Gear rack material | High-alloy stainless steel |