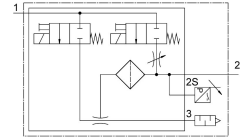
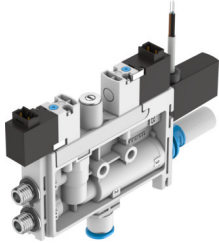


Vacuum generator OVEL-10-H-15-P-VQ6-UC-C-A-V1PNLK-H3

Part number: 8141089

FESTO



Data sheet

| Feature | Value |
|---|---|
| Nominal size, Laval nozzle | 0.95 mm |
| Grid dimension | 15 mm |
| Silencer design | Closed |
| Mounting position | optional |
| Ejector characteristic | High vacuum Standard |
| Grade of filtration | 40 µm |
| Manual override | Non-detenting |
| Integrated function | Electric ejector pulse Flow control Pressure sensor Electric on-off valve Filter Silencer closed |
| Design | T-shape |
| Switching element function | N/C or N/O contact, switchable |
| Switching function | Freely programmable |
| Valve function | Closed |
| Measurement method | Piezoresistive pressure sensor with display |
| Display type | LED indicator 2-digit |
| Setting options | IO-Link® Teach-in Via display and keys |
| Operating pressure for max. suction flow rate | 0.4 MPa 4 bar 58 psi |
| Operating pressure | 0.2 MPa...0.7 MPa 2 bar...7 bar 29 psi...101.5 psi |
| Operating pressure for max. vacuum | 0.41 MPa 4.1 bar 59.45 psi |
| Max. vacuum | 92 % |

| Feature | Value |
|--|---|
| Nominal operating pressure | 0.4 MPa 4 bar 58 psi |
| Max. suction flow rate against atmosphere | 21 l/min |
| Air supply time at nominal operating pressure with ejector pulse | 1 s |
| Operational voltage range DC | 21.6 V...26.4 V |
| Duty cycle | 100% |
| Switching output | PNP/NPN, switchable |
| Characteristic coil data | 24 V DC: 1.0 W |
| Approval | c UL us listed (OL) |
| KC mark | KC-EMV |
| CE mark (see declaration of conformity) | To EU EMC Directive |
| UKCA marking (see declaration of conformity) | To UK instructions for EMC |
| Operating medium | Compressed air to ISO 8573-1:2010 [7:4:4] |
| Note on operating and pilot medium | Lubricated operation not possible |
| Corrosion resistance class CRC | 2 - Moderate corrosion stress |
| LABS (PWIS) conformity | VDMA24364-B1/B2-L |
| Media temperature | 0 °C...50 °C |
| Sound pressure level at nominal operating pressure | 56 dB(A) |
| Degree of protection | IP40 |
| Ambient temperature | 0 °C...50 °C |
| Product weight | 93 g |
| Operating voltage range, DC sensor | 18 V...30 V |
| Pressure measuring range | -0.1 MPa...0 MPa -1 bar...0 bar -14.5 psi...0 psi |
| Electrical connection input, function | Ejector pulse Vacuum generation |
| Electrical connection input, connection type | 2x plug connector |
| Electrical connection input, connector system | Connection pattern H |
| Electrical connection input, number of connections/cores | 2 |
| Input electrical connection, mounting type | Snap-locking |
| Electrical connection output, function | Sensor |
| Electrical connection output, connection type | Cable |
| Electrical connection output, connector system | Open end |
| Electrical connection output, number of connections/cores | 3 |
| Cable characteristic | Suitable for energy chains |
| Cable diameter | 2.9 mm |
| Cable diameter tolerance | ± 0.1 mm |
| Cable length | 2.5 m |
| Nominal cross section conductor | 0.14 mm² |
| Type of mounting | On manifold rail |
| Pneumatic connection, port 1 | Common line |
| Pneumatic connection, port 3 | Silencer closed |
| Vacuum connection | For tubing O.D. 6 mm |
| Cable sheath colour | Grey |
| Material connecting thread | POM |
| Note on materials | RoHS-compliant |
| Material seals | NBR |
| Material receiver nozzle | POM |
| Material filter | POM |
| Material housing | PA-reinforced |
| Material hollow bolt | Wrought aluminium alloy |
| Material cable sheath | PVC |

| Feature | Value |
|-----------------------------|-------------------------|
| Material adjusting screw | Steel |
| Material silencer | PA-reinforced PE |
| Material screws | Steel |
| Material transmitter nozzle | Wrought aluminium alloy |