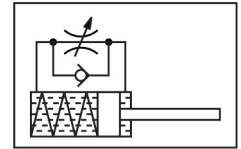


# Shock absorber DYSS-G8-10-10-Y1F-F1A

Part number: 8132350

FESTO



## Data sheet

| Feature  | Value  |
|--|--|
| Size   | 10   |
| Stroke   | 10 mm  |
| Cushioning   | Self-adjusting   |
| Mounting position                                  | optional   |
| Position detection                                 | Without  |
| Variants   | Metals with copper, zinc or nickel by mass as main constituent are excluded from use. Exceptions are nickel in steel, chemically nickel-plated surfaces, printed circuit boards, cables, electrical plug connectors and coils.   |
| Max. impact speed                                  | 1.5 m/s  |
| Reset time at room temperature                     | 0.2 s  |
| Reset time at min. ambient temperature             | 1 s  |
| Mode of operation                                  | Pushing<br>Single-acting   |
| Corrosion resistance class CRC                     | 2 - Moderate corrosion stress  |
| LABS (PWIS) conformity                             | VDMA24364-B2-L   |
| Suitability for the production of Li-ion batteries | Product corresponds to the internal product definition from Festo for use in battery production:Metals with more than 1% by mass of copper, zinc or nickel are excluded from use.The exceptions are nickel in steel, chemically nickel-plated surfaces, printed circuit boards, cables, electrical plug connectors and coils |
| Ambient temperature                                | -10 °C...80 °C   |
| Cushioning length                                  | 10 mm  |
| Max. stop force                                    | 700 N  |
| Max. tightening torque                             | 8 Nm   |
| Max. energy consumption per stroke                 | 6 J  |
| Max. energy consumption per hour                   | 25000 J  |
| Max. residual energy                               | 0.03 J   |
| Reset force  | 4 N  |
| Min. insertion force                               | 24 N   |
| Product weight                                     | 105 g  |
| Load range   | 20 kg  |
| Type of mounting                                   | Via threaded sleeve  |
| Note on materials                                  | RoHS-compliant   |

| Feature             | Value            |
|---------------------|------------------|
| Material seals      | NBR              |
| Material housing    | High-alloy steel |
| Material piston rod | High-alloy steel |