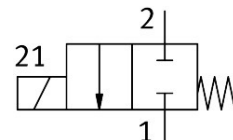


# Media separated solenoid valve VYKB-F10-M22C-16-PE-1HPS

Part number: 8122816

**FESTO**



## Data sheet

| Feature                                   | Value   |
|---|---|
| Design                                    | Electrical connection at top<br>Rocker valve with diaphragm seal                                    |
| Sealing principle                         | Soft  |
| Material in contact with the medium       | EPDM<br>PEEK  |
| Valve function                            | 2/2-way, closed, monostable   |
| Nominal size                              | 1.6 mm  |
| Flow direction                            | Non-reversible  |
| Type of actuation                         | Electric  |
| Type of piloting                          | Direct  |
| Type of reset                             | Mechanical spring   |
| Manual override                           | None  |
| Mounting position                         | optional  |
| Type of mounting                          | Via through-hole for M2 screw   |
| Electrical connection 1, connection type  | Cable with plug   |
| Electrical connection 1, connector system | Connection pattern HP   |
| Size                                      | 10  |
| Fluid connection                          | Flange  |
| Medium                                    | Liquid media<br>Gaseous media   |
| Note on the medium                        | Observe resistance of materials that come into contact with the media<br>Maximum particle size 5 µm |
| Internal volume                           | 35 µl   |
| Media temperature                         | 0 °C...50 °C  |
| Media temperature for fluids              | 0 °C...50 °C  |
| Ambient temperature                       | 0 °C...50 °C  |
| Storage temperature                       | -20 °C...70 °C  |
| Medium pressure                           | -0.075 MPa...0.1 MPa<br>-0.75 bar...1 bar<br>-10.875 psi...14.5 psi                                 |
| Overload pressure                         | 0.3 MPa<br>3 bar<br>43.5 psi  |
| Operational voltage range DC              | 24 V  |

| Feature                                      | Value   |
|--|---|
| Permissible voltage fluctuations             | +/- 10 %  |
| Characteristic coil data                     | 24 V DC: low-current phase 1 W, high-current phase 3.7 W    |
| Duty cycle                                   | 100%  |
| Max. switching frequency                     | 2 Hz  |
| Switching time on                            | 15 ms   |
| Switching time off                           | 15 ms   |
| Flow rate Kv                                 | 0.034 m³/h  |
| Material housing                             | PEEK  |
| Material membrane                            | EPDM  |
| Material seals                               | EPDM  |
| Note on materials                            | RoHS-compliant  |
| LABS (PWIS) conformity                       | VDMA24364 zone III  |
| Product weight                               | 18 g  |
| Degree of protection                         | IP40  |
| Corrosion resistance class CRC               | 0 - No corrosion stress                                     |
| CE mark (see declaration of conformity)      | To EU EMC Directive<br>In accordance with EU RoHS Directive |
| UKCA marking (see declaration of conformity) | To UK instructions for EMC<br>To UK RoHS instructions       |