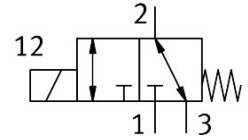
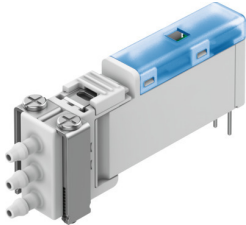


# Solenoid valve

## VOVK-BT6-M32C-MN-5T1P-B3F

Part number: 8122788

**FESTO**



## Data sheet

Feature	Value
Valve function	3/2-way, closed, monostable
Type of actuation	Electric
Construction width	5.9 mm
Standard nominal flow rate (standardised to DIN 1343)	5.5 l/min
pneumatic working port	For tubing I.D. 1.5 mm
Operating pressure	-0.1 MPa...0.7 MPa -1 bar...7 bar -14.5 psi...100 psi
Note on operating pressure	Operating pressure at port 3: -1 to 0 bar only
Design	Connection orientation forwards Poppet valve with spring return
Type of reset	Mechanical spring
Degree of protection	IP40
Nominal size	0.36 mm
Exhaust-air function	With flow control option
Sealing principle	Soft
Mounting position	optional
Manual override	None
Type of piloting	Electric
Flow direction	Reversible
Cv value	0.006 Gal/min US
Max. switching frequency	10 Hz
Switching time off	6 ms
Note on switching time off	At $-1 < p < 6$ bar
Switching time on	13 ms
Note on switching time on	$\leq 6$ ms at $0 < p < 6$ bar, $\leq 13$ ms at $-1 < p < 0$ bar
Duty cycle	100% within 500 h
Electrical power consumption	0.5 W
Nominal operating voltage DC	12 V
Permissible voltage fluctuations	+/- 10 %
Operating medium	Compressed air to ISO 8573-1:2010 [6:4:1]
Note on operating and pilot medium	Lubricated operation not possible

Feature	Value
Corrosion resistance class CRC	1 - Low corrosion stress
LABS (PWIS) conformity	VDMA24364 zone III
Media temperature	5 °C...50 °C
Relative air humidity	70%
Note on relative air humidity	At ambient temperature
Ambient temperature	5 °C...50 °C
Product weight	4.5 g
Electrical connection	2-pin
Type of mounting	With through-hole
Pneumatic connection, port 1	For tubing I.D. 1.5 mm
Pneumatic connection, port 3	For tubing I.D. 1.5 mm
Note on materials	RoHS-compliant
Material housing	PBT
Material spring	High-alloy stainless steel