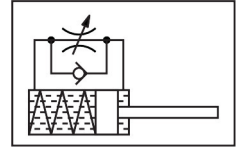


# Shock absorber DYSS-G8-2-4-Y1F-F1A

Part number: 8119980

**FESTO**



## Data sheet

| Feature  | Value  |
|--|--|
| Size   | 2  |
| Stroke   | 4 mm   |
| Cushioning   | Self-adjusting   |
| Mounting position                                  | optional   |
| Position detection                                 | Without  |
| Max. impact speed                                  | 0.5 m/s  |
| Reset time at room temperature                     | 0.5 s  |
| Reset time at min. ambient temperature             | 1 s  |
| Mode of operation                                  | Pushing<br>Single-acting   |
| Corrosion resistance class CRC                     | 2 - Moderate corrosion stress  |
| LABS (PWIS) conformity                             | VDMA24364-B2-L   |
| Suitability for the production of Li-ion batteries | Product corresponds to the internal product definition from Festo for use in battery production: Metals with more than 1% by mass of copper, zinc or nickel are excluded from use. The exceptions are nickel in steel, chemically nickel-plated surfaces, printed circuit boards, cables, electrical plug connectors and coils |
| Ambient temperature                                | -10 °C...70 °C   |
| Cushioning length                                  | 4 mm   |
| Max. stop force                                    | 60 N   |
| Max. tightening torque                             | 0.4 Nm   |
| Max. energy consumption per stroke                 | 0.1 J  |
| Max. energy consumption per hour                   | 270 J  |
| Max. residual energy                               | 0.003 J  |
| Reset force  | 0.4 N  |
| Min. insertion force                               | 2.5 N  |
| Product weight                                     | 3.9 g  |
| Load range   | 0.8 kg   |
| Type of mounting                                   | Via threaded sleeve  |
| Note on materials                                  | RoHS-compliant   |
| Material seals                                     | NBR  |
| Material housing                                   | High-alloy steel   |
| Material piston rod                                | High-alloy steel   |

