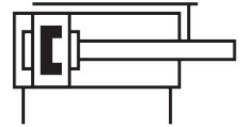
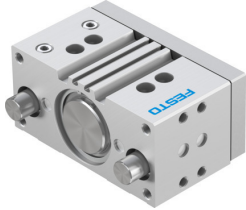


Guided drive DFM-63-25-P-A-KF-F1A

Part number: 8118954

FESTO



Data sheet

Feature	Value
Distance from centre of gravity of load to yoke plate xs	50 mm
Stroke	25 mm
Piston diameter	63 mm
Operating mode, drive unit	Yoke
Cushioning	Elastic cushioning rings/plates at both ends
Mounting position	optional
Guide	Recirculating ball bearing guide
Design	Guidance
Position detection	Via proximity switch
Variants	Metals with copper, zinc or nickel by mass as main constituent are excluded from use. Exceptions are nickel in steel, chemically nickel-plated surfaces, printed circuit boards, cables, electrical plug connectors and coils.
Operating pressure	0.1 MPa...1 MPa 1 bar...10 bar
Max. speed	0.6 m/s
Mode of operation	Double-acting
Operating medium	Compressed air to ISO 8573-1:2010 [7:4:4]
Note on operating and pilot medium	Lubricated operation possible (in which case lubricated operation will always be required)
Corrosion resistance class CRC	0 - No corrosion stress
LABS (PWIS) conformity	VDMA24364-B1/B2-L
Suitability for the production of Li-ion batteries	Product corresponds to the internal product definition from Festo for use in battery production: Metals with more than 1% by mass of copper, zinc or nickel are excluded from use. The exceptions are nickel in steel, chemically nickel-plated surfaces, printed circuit boards, cables, electrical plug connectors and coils
Ambient temperature	-5 °C...60 °C
Impact energy in end positions	1.3 Nm
Max. force Fy	1487 N
Max. force Fy static	1600 N
Max. force Fz	1487 N
Max. force Fz static	1600 N
Max. moment Mx	92.97 Nm

Feature	Value
Max. torque Mx static	100 Nm
Max. moment My	31.98 Nm
Max. torque My static	34.4 Nm
Max. moment Mz	31.98 Nm
Max. torque Mz static	34.4 Nm
Max. permissible torque load Mx as a function of stroke	21.98 Nm
Max. effective load dependent upon stroke at defined distance xs	235 N
Theoretical force at 0.6 MPa (6 bar, 87 psi), return stroke	1750 N
Theoretical force at 0.6 MPa (6 bar, 87 psi), advance stroke	1870 N
Moving mass	2241 g
Product weight	4242 g
Centre of gravity of moving mass as a function of stroke	27.8 mm
alternative connections	See product drawing
Pneumatic connection	G1/4
Note on materials	RoHS-compliant
Material cover	Wrought aluminium alloy
Material seals	NBR
Material housing	Wrought aluminium alloy
Material piston rod	High-alloy stainless steel