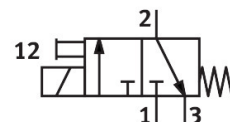
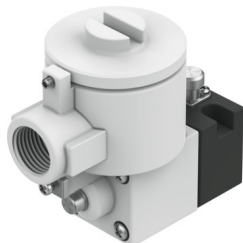


# Pilot valve

## MGXDH-3/2-H-T-1.2-24DC-EX

Part number: 8118345

FESTO



## Data sheet

Feature	Value
Valve function	3/2-way, closed, monostable
Type of actuation	Electric
Operating pressure	-0.09 MPa...0.8 MPa -0.9 bar...8 bar -13.05 psi...116 psi
Design	On/off valve
Type of reset	Mechanical spring
CE mark (see declaration of conformity)	To EU Explosion Protection Directive (ATEX)
Explosion protection certification outside the EU	EPL Db (CN) EPL Db (IEC-EX) EPL Gb (CN) EPL Gb (IECEx)
Certificate issuing authority	ATEX: CML 15 ATEX 1119X IEC: IECEx CML 17.0147X
ATEX category gas	II 2G
ATEX category dust	II 2D
Explosion ignition protection type for gas	Ex db IIC T5 Gb
Explosion ignition protection type for dust	Ex tb IIIC T100°C Db
Explosion ambient temperature	-65 °C ≤ Ta ≤ +55 °C
Degree of protection	IP66
Manual override	Non-detenting
Flow direction	Non-reversible
Duty cycle	100%
Insulation material class	H
Characteristic coil data	24 V DC: 3.0 W
Permissible frequency fluctuations	+/- 10%
Explosion protection	Zone 1 (ATEX) Zone 1 (CN) Zone 1 (IEC-EX) Zone 2 (ATEX) Zone 21 (ATEX) Zone 21 (CN) Zone 21 (IEC-EX) Zone 22 (ATEX)
Operating medium	Compressed air to ISO 8573-1:2010 [7:4:4]

Feature	Value
Note on operating and pilot medium	Lubricated operation possible (in which case lubricated operation will always be required)
Corrosion resistance class CRC	2 - Moderate corrosion stress
LABS (PWIS) conformity	VDMA24364 zone III
Ambient temperature	-65 °C...80 °C
Type of mounting	CNOMO
Note on materials	RoHS-compliant