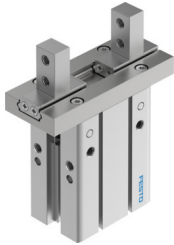


# Parallel gripper DHPC-32-A-NO-S

Part number: 8116887

**FESTO**



## Data sheet

| Feature  | Value   |
|--|---|
| Size   | 32  |
| Stroke per gripper jaws                              | 11 mm   |
| Max. replacement accuracy                            | 0.2 mm  |
| Max. angular gripper jaw backlash ax, ay             | 0 deg   |
| Max. gripper jaw backlash Sz                         | 0 mm  |
| Rotationally symmetrical                             | 0.2 mm  |
| Repetition accuracy, gripper                         | 0.02 mm   |
| Number of gripper jaws                               | 2   |
| Drive system   | Pneumatic   |
| Mounting position                                    | optional  |
| Mode of operation                                    | Single-acting<br>Open   |
| Gripper function                                     | Parallel  |
| Gripper force back-up                                | During opening  |
| Design   | Connection direction at side<br>Lever<br>Standard mounting method for gripper fingers<br>Force pilot operated motion sequence |
| Guide  | Ball guide  |
| Position detection                                   | Via proximity switch  |
| Operating pressure                                   | 0.25 MPa...0.8 MPa<br>2.5 bar...8 bar<br>36.25 psi...116 psi  |
| Max. operating frequency of gripper                  | 1 Hz  |
| Min. opening time at 0.6 MPa (6 bar, 87 psi)         | 174 ms  |
| Min. closing time at 0.6 MPa (6 bar, 87 psi)         | 76 ms   |
| Operating medium                                     | Compressed air to ISO 8573-1:2010 [7:4:4]   |
| Note on operating and pilot medium                   | Lubricated operation possible (in which case lubricated operation will always be required)                                    |
| Corrosion resistance class CRC                       | 0 - No corrosion stress   |
| LABS (PWIS) conformity                               | VDMA24364-B2-L  |
| Ambient temperature                                  | -10 °C...60 °C  |
| Total gripping force, closing, 0.6MPa (6bar, 87 psi) | 415.2 N   |

| Feature   | Value   |
|---|---|
| Gripper force per gripper jaw, closing, 0.6 MPa (6 bar, 87 psi) | 207.6 N   |
| Mass moment of inertia  | 5.76 kgcm <sup>2</sup>  |
| Max. force on gripper jaw Fz static                             | 246.8 N   |
| Max. torque at gripper Mx static                                | 10.9 Nm   |
| Max. torque at gripper My static                                | 6.29 Nm   |
| Max. torque at gripper Mz static                                | 6.29 Nm   |
| Product weight  | 831 g   |
| Type of mounting  | Direct mounting via through-hole<br>Direct mounting via thread<br>On mounting frame<br>Via through-hole and dowel pin<br>Via female thread and dowel pin<br>Either: |
| Pneumatic connection  | M5  |
| Note on materials   | RoHS-compliant  |
| Material housing  | Anodised aluminium  |
| Material gripper jaws   | High-alloy stainless steel  |