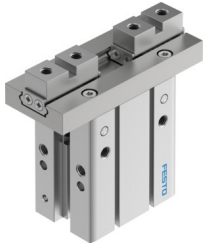


# Parallel gripper DHPC-32-A-B-2

Part number: 8116886

FESTO



## Data sheet

Feature	Value
Size	32
Stroke per gripper jaws	11 mm
Max. replacement accuracy	0.2 mm
Max. angular gripper jaw backlash ax, ay	0 deg
Max. gripper jaw backlash Sz	0 mm
Rotationally symmetrical	0.2 mm
Repetition accuracy, gripper	0.02 mm
Number of gripper jaws	2
Drive system	Pneumatic
Mounting position	optional
Mode of operation	Double-acting
Gripper function	Parallel
Gripper force back-up	None
Design	Connection direction downwards Flat mounting method for gripper fingers Lever Force pilot operated motion sequence
Guide	Ball guide
Position detection	Via proximity switch
Variants	Metals with copper, zinc or nickel by mass as main constituent are excluded from use. Exceptions are nickel in steel, chemically nickel-plated surfaces, printed circuit boards, cables, electrical plug connectors and coils.
Operating pressure	0.1 MPa...0.8 MPa 1 bar...8 bar 14.5 psi...116 psi
Max. operating frequency of gripper	1 Hz
Min. opening time at 0.6 MPa (6 bar, 87 psi)	114 ms
Min. closing time at 0.6 MPa (6 bar, 87 psi)	107 ms
Operating medium	Compressed air to ISO 8573-1:2010 [7:4:4]
Note on operating and pilot medium	Lubricated operation possible (in which case lubricated operation will always be required)
Corrosion resistance class CRC	0 - No corrosion stress
LABS (PWIS) conformity	VDMA24364-B2-L

Feature	Value
Suitability for the production of Li-ion batteries	Product corresponds to the internal product definition from Festo for use in battery production: Metals with more than 1% by mass of copper, zinc or nickel are excluded from use. The exceptions are nickel in steel, chemically nickel-plated surfaces, printed circuit boards, cables, electrical plug connectors and coils
Ambient temperature	-10 °C...60 °C
Total gripping force, opening, 0.6MPa (6bar, 87 psi)	493.7 N
Total gripping force, closing, 0.6MPa (6bar, 87 psi)	442.6 N
Gripper force per gripper jaw, opening, 0.6 MPa (6 bar, 87 psi)	246.9 N
Gripper force per gripper jaw, closing, 0.6 MPa (6 bar, 87 psi)	221.3 N
Mass moment of inertia	5.51 kgcm <sup>2</sup>
Max. force on gripper jaw Fz static	246.8 N
Max. torque at gripper Mx static	10.9 Nm
Max. torque at gripper My static	6.29 Nm
Max. torque at gripper Mz static	6.29 Nm
Product weight	774 g
Type of mounting	Direct mounting via through-hole Direct mounting via thread On mounting frame Via through-hole and dowel pin Via female thread and dowel pin Either:
Pneumatic connection	M5
Note on materials	RoHS-compliant
Material housing	Anodised aluminium
Material gripper jaws	High-alloy stainless steel