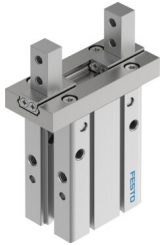


# Parallel gripper DHPC-L-25-A-S

Part number: 8116867

FESTO



## Data sheet

Feature	Value
Size	25
Stroke per gripper jaws	11 mm
Max. replacement accuracy	0.2 mm
Max. angular gripper jaw backlash ax, ay	0 deg
Max. gripper jaw backlash Sz	0 mm
Rotationally symmetrical	0.2 mm
Repetition accuracy, gripper	0.02 mm
Number of gripper jaws	2
Drive system	Pneumatic
Mounting position	optional
Mode of operation	Double-acting
Gripper function	Parallel
Gripper force back-up	None
Design	Connection direction at side Lever Standard mounting method for gripper fingers Force pilot operated motion sequence
Guide	Ball guide
Position detection	Via proximity switch
Variants	Metals with copper, zinc or nickel by mass as main constituent are excluded from use. Exceptions are nickel in steel, chemically nickel-plated surfaces, printed circuit boards, cables, electrical plug connectors and coils.
Operating pressure	0.1 MPa...0.8 MPa 1 bar...8 bar 14.5 psi...116 psi
Max. operating frequency of gripper	3 Hz
Min. opening time at 0.6 MPa (6 bar, 87 psi)	162 ms
Min. closing time at 0.6 MPa (6 bar, 87 psi)	93 ms
Max. mass per external gripper finger	160 g
Operating medium	Compressed air to ISO 8573-1:2010 [7:4:4]
Note on operating and pilot medium	Lubricated operation possible (in which case lubricated operation will always be required)
Corrosion resistance class CRC	0 - No corrosion stress

Feature	Value
LABS (PWIS) conformity	VDMA24364-B2-L
Suitability for the production of Li-ion batteries	Suitable for battery production with reduced Cu/Zn/Ni values (F1a)
Ambient temperature	-10 °C...60 °C
Total gripping force, opening, 0.6MPa (6bar, 87 psi)	305.3 N
Total gripping force, closing, 0.6MPa (6bar, 87 psi)	255.6 N
Gripper force per gripper jaw, opening, 0.6 MPa (6 bar, 87 psi)	152.6 N
Gripper force per gripper jaw, closing, 0.6 MPa (6 bar, 87 psi)	127.8 N
Mass moment of inertia	2.14 kgcm <sup>2</sup>
Max. force on gripper jaw Fz static	155.9 N
Max. torque at gripper Mx static	4.83 Nm
Max. torque at gripper My static	2.52 Nm
Max. torque at gripper Mz static	2.52 Nm
Product weight	484 g
Type of mounting	Either: Direct mounting via through-hole Direct mounting via thread On mounting frame Via through-hole and dowel pin Via female thread and dowel pin
Pneumatic connection	M5
Note on materials	RoHS-compliant
Material housing	Anodised aluminium
Material gripper jaws	High-alloy stainless steel