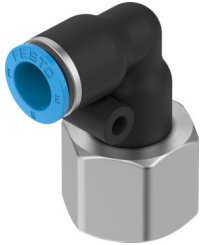


Push-in L-fitting NPQE-L-G38F-Q8-P5

Part number: 8113009

FESTO



Data sheet

Feature	Value
Size	Standard
Nominal size	6 mm
Mounting position	optional
Design	L-shape Push-pull principle
Size of pack	5
Operating pressure complete temperature range	-0.095 MPa...0.8 MPa -0.95 bar...8 bar -13.775 psi...116 psi
Operating medium	Compressed air to ISO 8573-1:2010 [7:4:4]
Note on operating and pilot medium	Lubricated operation possible
Corrosion resistance class CRC	1 - Low corrosion stress
LABS (PWIS) conformity	VDMA24364 zone III
Cleanroom class	Class 4 according to ISO 14644-1
Ambient temperature	-5 °C...60 °C
Product weight	36.2 g
Type of mounting	External hexagon, size 21 mm
Pneumatic connection, port 1	Female thread G3/8
Pneumatic connection, port 2	For tubing outside diameter of 8 mm
Colour of release ring	Blue
Note on materials	RoHS-compliant
Material housing	Brass, nickel-plated PBT
Material release ring	POM
Material tubing seal	NBR
Material tubing clamp component	Stainless steel