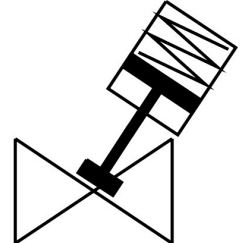


Angle seat valve

VZXA-B-TS6-32-M2-B1T-4.4-K-46-17-PM

Part number: 8111594

FESTO



Data sheet

Feature	Value
Design	Poppet valve with piston drive
Type of actuation	Pneumatic
Mounting position	optional
Type of mounting	In-line installation
Line connection	Threaded coupling G1 1/4 to DIN ISO 228
Valve function	2/2
Flow direction	Non-reversible
Medium pressure	0 MPa...0.44 MPa 0 bar...4.4 bar
Type of reset	Mechanical spring
Type of piloting	Externally controlled
Pneumatic connection	Female thread G1/8
Operating pressure	0.5 MPa...0.7 MPa 5 bar...7 bar 72.5 psi...101.5 psi
Medium	Vapour Mineral oil-based hydraulic fluid Inert gases Mineral oil Water Filtered compressed air, grade of filtration 200 µm Neutral fluids
Direction of flow	Below valve seat, for gaseous and liquid media
Control of medium	On/off operation
Operating medium	Compressed air to ISO 8573-1:2010 [7:4:4]
Max. viscosity	600 mm ² /s
Media temperature	-10 °C...180 °C
Ambient temperature	0 °C...60 °C
Flow rate Kv	22.2 m ³ /h
Outdoor applications	Weather-protected application areas Class C1 based on IEC 60654-1
Note on materials	RoHS-compliant
LABS (PWIS) conformity	VDMA24364 zone III

Feature	Value
Material process valve housing	Brass
Material number process valve housing	CW724R
Material seals	FPM
Material spindle seal	PTFE
Material seat seal	PTFE
Product weight	1937 g
CE mark (see declaration of conformity)	In accordance with EU Pressure Equipment Directive
UKCA marking (see declaration of conformity)	to UK Pressure Equipment Regulations
Size of drive	46 mm
Stroke	17 mm
Control function	Closed via spring force, N/C
Position detection	Via mechanical indicator
Material drive housing	PA-reinforced
Storage temperature	-10 °C...60 °C
Degree of protection	IP65 IP67
Material piston rod	High-alloy stainless steel
Material cover	PA-reinforced