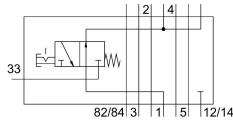
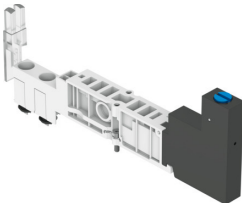


Vertical pressure shut-off plate VMPA14-HS

Part number: 8110429

FESTO



Data sheet

Feature	Value
Construction width	10 mm
Mounting position	optional
Vertical pneumatic linkage	Shut-off for 1
Operating pressure	3 bar...8 bar
Standard nominal flow rate ventilation	103 l/min
Standard nominal flow rate for exhaust	213 l/min
Operating medium	Compressed air to ISO 8573-1:2010 [7:4:4]
Note on operating and pilot medium	Lubricated operation possible (in which case lubricated operation will always be required)
Corrosion resistance class CRC	2 - Moderate corrosion stress
LABS (PWIS) conformity	VDMA24364-B2-L
Degree of protection	IP65
Ambient temperature	-5 °C...50 °C
Product weight	240 g
Mounting with vertical stacking	On manifold sub-base On individual sub-base
Note on materials	RoHS-compliant
Material housing	Wrought aluminium alloy PA-reinforced