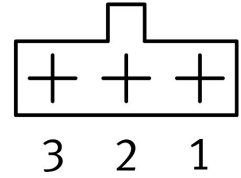
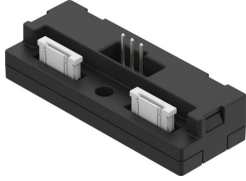


Electrical plug-in base NEFV-V13-XX4G3-T1G3

Part number: 8109877

FESTO



Data sheet

Feature	Value
Dimensions (W x L x H)	18.7 x 50 x 15.3 mm
Type of mounting	Via through-hole for M3 screw
Cable outlet	Straight
Product weight	6.8 g
Electrical connection 1, function	Field device side
Electrical connection 1, design	Angular
Electrical connection 1, connection type	Socket
Electrical connection 1, connector system	ZIF
Electrical connection 1, number of connections/cores	5
Electrical connection 1, used connections/cores	3
Electrical connection 1, type of mounting	Plug-in
Electrical connection 2, function	Field device side
Electrical connection 2, design	Angular
Electrical connection 2, connection type	Socket
Electrical connection 2, connector system	ZIF
Electrical connection 2, number of connections/cores	5
Electrical connection 2, used connections/cores	3
Electrical connection 2, type of mounting	Plug-in
Electrical connection 3, function	Controller side
Electrical connection 3, design	Rectangular
Electrical connection 3, connection type	Plugs
Electrical connection 3, connector system	Festo-specific coding
Electrical connection 3, number of connections/cores	3
Electrical connection 3, used connections/cores	3
Electrical connection 3, type of mounting	Plug-in
Operational voltage range DC	0 V...310 V
Protective conductor connection	Not available
Shielding	no
Degree of protection	IP40
Note on degree of protection	In assembled state
Ambient temperature	-10 °C...60 °C

Feature	Value
Storage temperature	-40 °C...80 °C
CE mark (see declaration of conformity)	In accordance with EU RoHS Directive
UKCA marking (see declaration of conformity)	To UK instructions for EMC
LABS (PWIS) conformity	VDMA24364-B2-L
Note on materials	RoHS-compliant
Pollution degree	2
Corrosion resistance class CRC	1 - Low corrosion stress
Material housing	PA
Housing colour	Black
Material electrical contact	Nickel-plated and gold-plated bronze