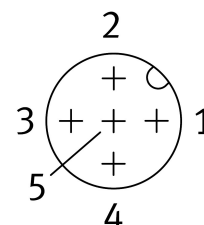
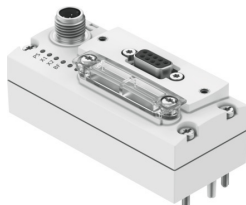


Bus node CTEU-PB-EX1C

Part number: 8107588

FESTO



Data sheet

Feature	Value
Protocol	Profibus DP
Dimensions (W x L x H)	40 x 91 x 50 mm
Grid dimension	40 mm
Type of mounting	On electrical interface On electrical sub-base
Product weight	90 g
Ambient temperature	-5 °C...50 °C
Storage temperature	-20 °C...70 °C
Degree of protection	IP65 IP67
Note on degree of protection	In assembled state Unused connections sealed
Corrosion resistance class CRC	2 - Moderate corrosion stress
LABS (PWIS) conformity	VDMA24364 zone III
CE mark (see declaration of conformity)	To EU EMC Directive In accordance with EU RoHS Directive
UKCA marking (see declaration of conformity)	To UK instructions for EMC To UK RoHS instructions
Approval	RCM trademark c UL us listed (OL)
Certificate issuing authority	UL E239998
Note on materials	RoHS-compliant
Material housing	PA
LED display, product-specific	PS: Operating voltage for electronics and load supply X1: System status of module at I-Port 1 X2: System status of module at I-Port 2
LED display, bus-specific	BF: Bus fault
Diagnosis	Communication fault System diagnostics Undervoltage
Operator controls	DIL switch
Note on fieldbus interface	Plug/socket M12x1 B-coded, 5-pin, IP65 protection Optional connection technology with accessories:

Feature	Value
Fieldbus interface	PROFIBUS
Field bus, protocol	PROFIBUS DP
Field bus, connection type	Socket
Field bus, connection system	Sub-D
Field bus, connection pattern	9
Field bus interface, electrical isolation	yes
Field bus interface, transmission rate	1.5 Mbps 12 Mbit/s 187.5 kbit/s 19.2 kbit/s 500 kbit/s 9.6 kbit/s 93.75 kbit/s
Max. address volume, inputs	16 Byte
Max. address volume, outputs	16 Byte
Parameterisation	Diagnostic behaviour Fail-safe response
Internal cycle time	1 ms per 1 byte of user data
Configuration support	GSD file
Additional functions	Emergency message System status via diagnostic test
Power supply, function	Electronics and load
Power supply, connection type	Plugs
power supply, connection system	M12x1, A-coded according to EN 61076-2-101
Power supply, number of pins/wires	5
Operational voltage range DC	18 V...30 V
Nominal operating voltage DC	24 V
Max. power supply	4 A
Intern power consumption nominal operating voltage	Typically 100 mA