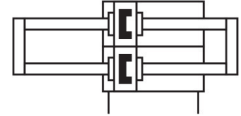
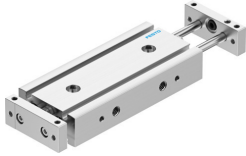


# Twin cylinder DGTZ-GF-6-20-J-T-P-A

Part number: 8103468

FESTO



## Data sheet

Feature	Value
Stroke	20 mm
Adjustable end-position range/length	10 mm
Piston diameter	6 mm
Operating mode, drive unit	Two yokes
Cushioning	Elastic cushioning rings/plates at both ends
Mounting position	optional
Guide	Plain-bearing guide
Design	Guidance
Position detection	Via proximity switch
Operating pressure	0.2 MPa...0.8 MPa 2 bar...8 bar
Mode of operation	Double-acting
Operating medium	Compressed air to ISO 8573-1:2010 [7:4:4]
Note on operating and pilot medium	Lubricated operation possible (in which case lubricated operation will always be required)
Corrosion resistance class CRC	1 - Low corrosion stress
LABS (PWIS) conformity	VDMA24364 zone III
Cleanroom class	Class 6 according to ISO 14644-1
Ambient temperature	-10 °C...80 °C
Impact energy in end positions	0.01 Nm
Max. effective load dependent upon stroke at defined distance xs	2 N
Theoretical force at 0.6 MPa (6 bar, 87 psi), return stroke	18.6 N
Theoretical force at 0.6 MPa (6 bar, 87 psi), advance stroke	18.6 N
Moving mass	33.5 g
Product weight	146 g
Pneumatic connection	M5
Note on materials	RoHS-compliant
Material cover	Wrought aluminium alloy
Material seals	NBR
Material housing	Anodised wrought aluminium alloy
Material piston rod	High-alloy stainless steel