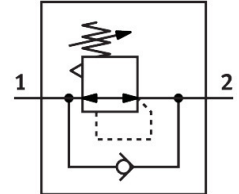
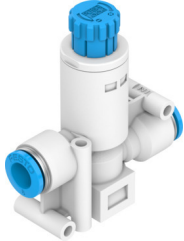


Pressure regulator VRPA-C-Q6-E

Part number: 8086001

FESTO



Data sheet

Feature	Value
Controller function	Output pressure constant With secondary venting With return flow function
Pneumatic connection, port 1	QS-6
Pneumatic connection, port 2	QS-6
Type of mounting	With through-hole
Standard nominal flow rate (standardised to DIN 1343)	90 l/min
Ambient temperature	0 °C...60 °C
Material housing	PBT
Operating medium	Compressed air to ISO 8573-1:2010 [7:4:4]
Mounting position	optional
Type of actuation	Manual
Adjustment component	Rotary knob with detent
Pressure regulation range	0.1 MPa...0.8 MPa 1 bar...8 bar 14.5 psi...116 psi
Note on operating and pilot medium	Lubricated operation possible (in which case lubricated operation will always be required)
LABS (PWIS) conformity	VDMA24364-B2-L
Cleanroom class	Class 4 according to ISO 14644-1
Product weight	20 g
Note on materials	RoHS-compliant
Material static seals	NBR