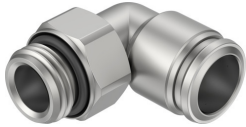


# Push-in fitting NPQR-L-G12-Q16

Part number: 8085690

**FESTO**



## Data sheet

Feature	Value
Size	Standard
Nominal size	14 mm
Tubing insertion depth	23.5 mm
Type of seal on screwed plug	Sealing ring
Mounting position	optional
Design	L-shape Push-pull principle
Size of pack	1
Operating pressure complete temperature range	-0.095 MPa...1.2 MPa -0.95 bar...12 bar -13.775 psi...174 psi
Note on operating pressure	Water: max. 0.7 MPa at 0 - 80 °C
Certificate issuing authority	NSF C0556009
Operating medium	Compressed air to ISO 8573-1:2010 [7:-:-] Water (liquid, ice-free)
Note on operating and pilot medium	Lubricated operation possible
Corrosion resistance class CRC	4 - Very high corrosion stress
LABS (PWIS) conformity	VDMA24364-B2-L
Suitability for the production of Li-ion batteries	Product corresponds to the internal product definition from Festo for use in battery production:Metals with more than 1% by mass of copper, zinc or nickel are excluded from use.The exceptions are nickel in steel, chemically nickel-plated surfaces, printed circuit boards, cables, electrical plug connectors and coils
Cleanroom class	Class 4 according to ISO 14644-1
Suitable for use with food	See declaration of conformity NSF/ANSI 169
Ambient temperature	-5 °C...150 °C
Note on ambient temperature	With PUN-H: -20°C - 60°C
Nominal torque	9 Nm
Tolerance for nominal tightening torque	± 20%
Product weight	99.7 g
Type of mounting	External hexagon, A/F 25 mm
Pneumatic connection, port 1	Male thread G1/2
Pneumatic connection, port 2	For tubing outside diameter of 16 mm

Feature	Value
Note on materials	RoHS-compliant
Material housing	High-alloy stainless steel
Material thread seal	FPM
Guard ring material	High-alloy stainless steel
Material release ring	High-alloy stainless steel
Material tubing seal	FPM
Material tubing clamp component	High-alloy stainless steel
Thrust ring material	PPSU