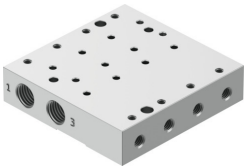


Manifold rail
VABM-P6-15M-G18-M5-4
Part number: 8083543



Data sheet

Feature	Value
Grid dimension	15 mm
Design	Connection direction at side
Max. number of valve positions	4
Corrosion resistance class CRC	2 - Moderate corrosion stress
LABS (PWIS) conformity	VDMA24364-B2-L
Max. tightening torque for valve mounting	0.6 Nm
Product weight	140 g
Pneumatic connection, port 1	G1/8
Pneumatic connection, port 2	M5
Note on materials	RoHS-compliant
Material manifold rail	Wrought aluminium alloy