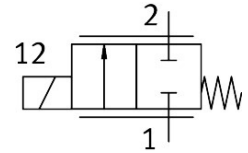


Proportional directional control valve VPWS-1.5-B-6-PC15-8-V

Part number: 8074075

FESTO



Data sheet

| Feature | Value |
|---|--|
| Nominal size | 1.5 mm |
| Type of actuation | Electric |
| Sealing principle | Soft |
| Mounting position | optional |
| Design | Directly actuated poppet valve |
| Type of reset | Mechanical spring |
| Type of piloting | Direct |
| Flow direction | Non-reversible |
| Valve function | 2/2 proportional directional control valve, closed |
| Operating pressure | 0 MPa...0.8 MPa 0 bar...8 bar |
| Nominal operating pressure | 0.8 MPa 8 bar 116 psi |
| Burst pressure | 3 MPa 30 bar 435 psi |
| Standard flow rate (standardised to DIN 1343) | 82 l/min...98 l/min |
| Hysteresis | 16 mA |
| Max. switching frequency | 18 Hz |
| Current regulating range | 0 mA...200 mA |
| Max. electrical power consumption | 2.5 W |
| Coil resistance R20 | 60.5 Ohm |
| Duty cycle | 100% (see operating instructions) |
| Oxygen suitability according to standard | ISO 15001 |
| Biocompatibility according to standard | ISO 18562 |
| Maximum impurity level for hydrocarbons | 550 MGM |
| Vibration resistance | Transport application test with severity level 1 to FN 942017-4 and EN 60068-2-6 |
| Note on vibration resistance | Oscillation in the Z direction can lead to fluctuations in the flow rate |
| Shock resistance | Shock test with severity level 1 to FN 942017-5 and EN 60068-2-27 |
| Note on shock resistance | A shock in the Z-direction can lead to fluctuations in the flow rate |
| Corrosion resistance class CRC | 1 - Low corrosion stress |

| Feature | Value |
|--|--|
| LABS (PWIS) conformity | VDMA24364 zone III |
| Medium | Inert gases Air Oxygen |
| Note on the medium | Lubricated operation not possible Maximum particle size 10 µm |
| Media temperature | 5 °C...50 °C |
| Degree of protection | IP60 |
| Note on degree of protection | IP65 with suitable plug In assembled state |
| Ambient temperature | 5 °C...50 °C |
| Storage temperature | -40 °C...80 °C |
| Product weight | 23 g |
| Electrical connection 1, connection type | Cable |
| Electrical connection 1, connector system | Open end |
| Electrical connection 1, number of connections/cores | 2 |
| Cable length | 70 mm...80 mm |
| Type of mounting | On sub-base Plug-in With accessories |
| Pneumatic connection, port 1 | Cartridge 15 mm |
| Pneumatic connection, port 2 | Cartridge 7.2 mm |
| Note on materials | RoHS-compliant |
| Material seals | FPM |
| Material housing | High-alloy steel |