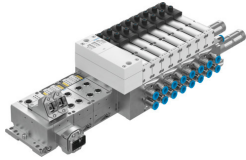


# Valve terminal VTSA-F-CB

Part number: 8073100

**FESTO**



## Data sheet

Feature	Value
Electrical control	Ethernet Fieldbus Integrated controller
Electrical I/O system	yes
Terminal type	46
Operating medium	Compressed air to ISO 8573-1:2010 [7:4:4]
Pilot medium	Compressed air to ISO 8573-1:2010 [7:4:4]
Note on operating and pilot medium	Lubricated operation not possible
Ambient temperature	-5 °C...50 °C
Storage temperature	-20 °C...60 °C
Relative air humidity	0 - 90%
Degree of protection	IP65
Corrosion resistance class CRC	0 - No corrosion stress
Operating pressure	-0.09 MPa...1 MPa -0.9 bar...10 bar
Pilot pressure	3 bar...10 bar
Operating pressure for valve terminal with internal pilot air supply	0.3 MPa...1 MPa 3 bar...10 bar 43.5 psi...145 psi
LABS (PWIS) conformity	VDMA24364-B1/B2-L
CE mark (see declaration of conformity)	To EU EMC Directive
KC mark	KC-EMV
Approval	c UL us - Recognized (OL)
Certificate issuing authority	UL E322346
Note on materials	RoHS-compliant
Valve terminal structure	Modular, valve sizes can be mixed
Manual override	Detenting Detenting via accessory Non-detenting Covered Self-resetting via electrical control signal
Number of voltage zones	6
Number of controllable coils per voltage zone	24
Number of controllable coils per valve terminal	96

Feature	Value
Type of actuation	Electric
Valve function	2x2/2-way, monostable, closed 2x3/2-way, monostable, closed 2x3/2-way, open, monostable 2x3/2-way, open/closed, monostable 5/2 double solenoid 5/2-way, bistable, dominant 5/2-way, monostable 5/3-way, pressurised 5/3 exhausted 5/3 closed 5/3-way, port 2 pressurised, 4 exhausted
Design	Piston gate valve
Valve size	18 mm 26 mm 42 mm 52 mm
Pilot air supply	External Internal
Max. standard nominal flow rate	700 l/min at 18 mm 1350 l/min at 26 mm 1860 l/min at 42 mm 2900 l/min at 52 mm
Suitability for vacuum	yes
Exhaust-air function	Via throttle plate
pneumatic working port	QS-6 QS-8 QS-10 QS-12 QS-16
Pilot air port 12	Ducted Either:
Note on forced dynamization	Switching frequency min. 1/month
Signal status display	LED
Nominal operating voltage DC	24 V
Permissible voltage fluctuations	+/- 10 %
Max. power supply	11 A