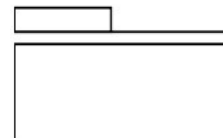
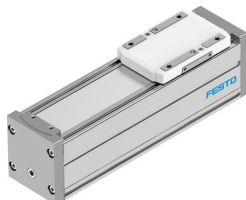


# Guide axis ELFC-KF-60-100

Part number: 8062812

FESTO



## Data sheet

Feature	Value
Working stroke	100 mm
Size	60
Mounting position	optional
Guide	Recirculating ball bearing guide
Design	Guidance
Position detection	Via proximity switch Via inductive sensors
Max. acceleration	15 m/s <sup>2</sup>
Max. speed	1.5 m/s
Duty cycle	100%
Corrosion resistance class CRC	0 - No corrosion stress
LABS (PWIS) conformity	VDMA24364 zone III
Suitability for the production of Li-ion batteries	Product corresponds to the internal product definition from Festo for use in battery production: Metals with more than 1% by mass of copper, zinc or nickel are excluded from use. The exceptions are nickel in steel, chemically nickel-plated surfaces, printed circuit boards, cables, electrical plug connectors and coils
Cleanroom class	Class 7 according to ISO 14644-1
Degree of protection	IP40
Ambient temperature	0 °C...50 °C
2nd moment of area I <sub>y</sub>	441000 mm <sup>4</sup>
2nd moment of area I <sub>z</sub>	542000 mm <sup>4</sup>
Max. force F <sub>y</sub>	3641 N
Max. force F <sub>z</sub>	3641 N
Max. moment M <sub>x</sub>	29.1 Nm
Max. moment M <sub>y</sub>	31.8 Nm
Max. moment M <sub>z</sub>	31.8 Nm
Max. force F <sub>y</sub> total axis	600 N
Max. force F <sub>z</sub> total axis	1800 N
Max. moment M <sub>x</sub> total axis	29.1 Nm
Max. moment M <sub>y</sub> total axis	31.8 Nm
Max. moment M <sub>z</sub> total axis	31.8 Nm
Torsional mass moment of inertia I <sub>t</sub>	29800 mm <sup>4</sup>

Feature	Value
Displacement force	6.75 N
Reference service life	5000 km
Maintenance interval	Life-time lubrication
Fy at theoretical life value of 100 km (only guide consideration)	13400 N
Fz at theoretical life value of 100 km (only guide consideration)	13400 N
Mx at theoretical life value of 100 km (only guide consideration)	107 Nm
My at theoretical life value of 100 km (only guide consideration)	117 Nm
Mz at theoretical life value of 100 km (only guide consideration)	117 Nm
Moving mass	407 g
Basic weight for 0 mm stroke	1029 g
Additional weight per 10 mm stroke	43 g
Dynamic deflection (moving load)	0.05% of the axis length, max. 0.5 mm
Static deflection (load in standstill)	0.1% of the axis length
Material end cap	Painted die cast aluminium
Material profile	Anodised wrought aluminium alloy
Note on materials	RoHS-compliant
Material cover tape	High-alloy stainless steel
Material guide slide	Steel
Material guide rail	Steel
Material slide	Die-cast aluminium