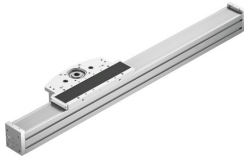


Cantilever axis ELCC-TB-KF-90- -

Part number: 8060573

FESTO



Data sheet

Feature	Value
Effective diameter of drive pinion	50.93 mm
Working stroke	50 mm...2000 mm
Size	90
Stroke reserve	0 mm...2000 mm
Toothed-belt pitch	5 mm
Mounting position	optional
Guide	Recirculating ball bearing guide
Design	Electromechanical cantilever axis
Max. acceleration	30 m/s ²
Max. speed	5 m/s
Repetition accuracy	±0.05 mm
Corrosion resistance class CRC	0 - No corrosion stress
LABS (PWIS) conformity	VDMA24364 zone III
Degree of protection	IP20
Ambient temperature	-10 °C...60 °C
2nd moment of area Iy	2667900 mm ⁴
2nd moment of area Iz	2049490 mm ⁴
Max. drive torque	33 Nm
Max. force Fy	13957 N
Max. force Fz	13523 N
Max. moment Mx	167 Nm
Max. moment My	1300 Nm
Max. moment Mz	1233 Nm
Max. feed force Fx	1200 N
Mass moment of inertia JH per metre of stroke	62.9 kgcm ²
Mass moment of inertia JL per kg of working load	6.5 kgcm ²
Mass moment of inertia JO	55.2 kgcm ²
Feed constant	160 mm/U
Reference service life	5000 km
Lubrication interval dependent on operating distance	1000 km
Moving mass with 0 mm stroke with second drive head	9208 g

Feature	Value
Moving mass for 0 mm stroke	5487 g
Additional moving mass per 10 mm stroke	97 g
Weight of additional slide	2997 g
Basic weight for 0 mm stroke	15713 g
Additional weight per 10 mm stroke	97 g
Basic weight for 0 mm stroke with 2nd drive head	22431 g
Material end cap	Anodised wrought aluminium alloy
Material profile	Anodised wrought aluminium alloy
Note on materials	RoHS-compliant
Material drive head	Anodised wrought aluminium alloy
Material guide rail	Rolled steel, Corrotect coated
Material housing	High-alloy stainless steel
Material slide	Anodised die-cast aluminium
Material toothed belt clamping piece	Anodised wrought aluminium alloy
Material toothed belt	Polychloroprene with glass filament and nylon coating PUR with steel cord and fabric sheathing Polyurethane with steel cord