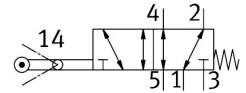


Swivel lever valve VMEF-VL-M52-M-N14

Part number: 8048990

FESTO



Data sheet

Feature	Value
Valve function	5/2-way, monostable
Type of actuation	Mechanical
Construction width	20 mm
Standard nominal flow rate (standardised to DIN 1343)	1200 l/min
pneumatic working port	1/4 NPT
Operating pressure	-0.095 MPa...1 MPa -0.95 bar...10 bar
Design	Piston gate valve Semi-rotary drive
Type of reset	Mechanical spring
Nominal size	7 mm
Sealing principle	Soft
Mounting position	optional
Type of piloting	Direct
Flow direction	Reversible
lap	Overlap
Max. actuating speed with lateral actuation	1 m/s
Max. switching frequency	2.5 Hz
Cam angle	45 deg
Operating medium	Compressed air to ISO 8573-1:2010 [7:-:-]
Note on operating and pilot medium	Lubricated operation possible (in which case lubricated operation will always be required)
Corrosion resistance class CRC	1 - Low corrosion stress
LABS (PWIS) conformity	VDMA24364-B1/B2-L
Media temperature	-10 °C...60 °C
Ambient temperature	-10 °C...60 °C
Note on ambient temperature	Influence of heat on wear
Actuating torque	1.2 Nm
Product weight	238 g
Type of mounting	With through-hole
Pneumatic connection, port 1	1/4 NPT
Pneumatic connection, port 2	1/4 NPT

Feature	Value
Pneumatic connection, port 3	1/4 NPT
Pneumatic connection, port 4	1/4 NPT
Pneumatic connection, port 5	1/4 NPT
Note on materials	RoHS-compliant
Material cover	PA-reinforced
Material seals	NBR
Material housing	Anodised wrought aluminium alloy