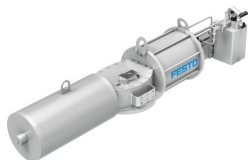


Semi-rotary drive DFPD-HD-32000-

Part number: 8042203

FESTO



Data sheet

Feature	Value
Size of valve actuator	32000
Flange hole pattern	F35
Piston diameter	385 mm 435 mm 485 mm 535 mm 585 mm 635 mm 685 mm 735 mm
Swivel angle	90 deg
End-position adjustment range at 0°	-5 deg...5 deg
End-position adjustment range at nominal swivel angle	-5 deg...5 deg
Shaft connection depth	230 mm
Fitting connection conforms to standard	ISO 5211
Cushioning	No cushioning
Mounting position	optional Horizontal
Mode of operation	Double-acting Single-acting
Design	Scotch yoke system
Position detection	Optical
Closing direction	Closes to the right Closes to the left
Certified for safety function to ISO 13849 and IEC 61508 (SIL)	Product can be used in SRP/CS up to SIL 2 (Low Demand)
Operating pressure	0.1 MPa...0.85 MPa 1 bar...8.5 bar 14.5 psi...123.25 psi
Nominal operating pressure	0.3 MPa...0.7 MPa 3 bar...7 bar 43.5 psi...101.5 psi
CE mark (see declaration of conformity)	To EU Explosion Protection Directive (ATEX)
UKCA marking (see declaration of conformity)	To UK EX instructions

Feature	Value
Explosion protection	Zone 1 (ATEX) Zone 2 (ATEX) Zone 21 (ATEX) Zone 22 (ATEX)
Certificate issuing authority	German Technical Control Board North (TÜV Nord) 212170802
ATEX category gas	II 2G
ATEX category dust	II 2D
Explosion ignition protection type for gas	Ex h IIB T6...T4 Gb X
Explosion ignition protection type for dust	Ex h IIC T85°C...T105°C Db X
Explosion ambient temperature	-20 °C ≤ Ta ≤ +80 °C
Operating medium	Compressed air to ISO 8573-1:2010 [7:4:4]
Note on operating and pilot medium	Dew point at least 10 °C below the ambient temperature and temperature of the medium Lubricated operation possible (in which case lubricated operation will always be required)
Corrosion resistance class CRC	0 - No corrosion stress
LABS (PWIS) conformity	VDMA24364 zone III
Degree of protection	IP66M IP67M
Ambient temperature	-20 °C...80 °C
Note on torque	The operating torque of the actuator must not be higher than the maximum permissible torque listed in ISO 5211, with reference to the size of the mounting flange and of the coupling.
Max. output torque	32000 Nm
Product weight	408 g...1498 g
Shaft connection	V120
Pneumatic connection	G1
Note on materials	RoHS-compliant
Material end cap	Steel
Material stop screw	Steel
Material bushing	Bronze PTFE
Material seals	NBR TPE-U(PU)
Material spring	Spring steel
Material spring rod	Steel, hard-chrome-plated
Material housing	Steel
Material piston	Steel
Material piston rod	Steel, hard-chrome-plated
Material tie rod	Steel
Material cylinder barrel	Nickel-plated steel