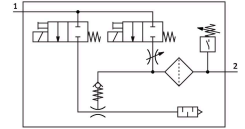


Vacuum generator OVEM-14-H-B-Q0-CE-N-LK

Part number: 8037696

FESTO



Data sheet

| Feature | Value |
|-----------------------------------------------|---------------------------------------------------------------------------------------------------------------------------------------------------------------------|
| Nominal size, Laval nozzle | 1.4 mm |
| Grid dimension | 20 mm |
| Silencer design | Open |
| Mounting position | optional |
| Ejector characteristic | High vacuum Standard |
| Grade of filtration | 40 µm |
| Manual override | Non-detenting Additionally via operating buttons |
| Integrated function | Electric ejector pulse valve Flow control Electric on-off valve Filter Air saving function, electrical Check valve Open silencer Vacuum switch |
| Design | Modular |
| Short circuit current rating | yes |
| Valve function | Closed |
| Reverse polarity protection | For all electrical connections |
| Standard switching input | IEC 61131-2 |
| Display type | 4-place alphanumeric Back-lit LCD |
| Switching position indicator | LCD |
| Operating pressure | 2 bar...8 bar |
| Operating pressure for max. vacuum | 3.6 bar |
| Max. vacuum | 93 % |
| Nominal operating pressure | 6 bar |
| Max. suction flow rate against atmosphere | 50.5 l/min |
| Air supply time at nominal operating pressure | 0.2 s |
| Operational voltage range DC | 20.4 V...27.6 V |
| Duty cycle | 100% |
| Max. output current | 100 mA |

| Feature | Value |
|----------------------------------------------------|------------------------------------------------------------------------------------------------------------|
| Off-state current | 0.1 mA |
| Characteristic coil data | 24 V DC: low-current phase 0.3 W, high-current phase 2.55 W |
| Overload protection | Available |
| Approval | RCM trademark c UL us listed (OL) |
| KC mark | KC-EMV |
| CE mark (see declaration of conformity) | To EU EMC Directive |
| UKCA marking (see declaration of conformity) | To UK instructions for EMC |
| Operating medium | Compressed air to ISO 8573-1:2010 [7:4:4] |
| Note on operating and pilot medium | Lubricated operation not possible |
| Corrosion resistance class CRC | 2 - Moderate corrosion stress |
| LABS (PWIS) conformity | VDMA24364 zone III |
| Media temperature | 0 °C...50 °C |
| Relative air humidity | 5 - 85 % |
| Sound pressure level at nominal operating pressure | 77 dB(A) |
| Degree of protection | IP65 |
| Ambient temperature | 0 °C...50 °C |
| Max. tightening torque | 0.8 Nm with female thread 2.5 Nm with through-hole |
| Product weight | 380 g |
| Pressure measuring range | -1 bar...0 bar |
| Protocol | IO-Link® |
| IO-Link, Protocol version | Device V 1.1 |
| IO-Link, Profile | Smart sensor profile |
| IO-Link, Function classes | Binary data channel (BDC) Process data variable (PDV) Identification Diagnostics Teach channel |
| IO-Link, communication mode | COM2 (38.4 kBaud) |
| IO-Link, Port class | A |
| IO-Link, Process data length OUT | 1 bytes |
| IO-Link, Process data content OUT | 1 bit (ejector pulse IN/OUT) 1 bit (vacuum ON/OFF) |
| IO-Link, Process data length IN | 2 bytes |
| IO-Link, Process data content IN | 14 bit PDV (pressure measurement value) 2 bit BDC (pressure monitoring) |
| IO-Link, Min. cycle time | 3.5 ms |
| IO-Link, Data storage required | 0.5 KB |
| IO-Link, Device ID | 0x00003E |
| Electrical connection | 5-pin M12x1 Plugs |
| Type of mounting | With through-hole Via female thread With accessories |
| Pneumatic connection, port 1 | QS-8 |
| Pneumatic connection, port 3 | QS-8 |
| Vacuum connection | QS-8 |
| Note on materials | RoHS-compliant |
| Material seals | NBR |
| Material receiver nozzle | POM |
| Material filter | Fabric PA Sintered steel |
| Material housing | Die-cast aluminium PA-reinforced |

| Feature | Value |
|-----------------------------|------------------------------------|
| Material adjusting screw | Steel |
| Material silencer | Wrought aluminium alloy PU foam |
| Material screws | Steel |
| Material connector housing | Nickel-plated brass |
| Material pins | Steel |
| Material transmitter nozzle | Wrought aluminium alloy |
| Material fitting | Nickel-plated brass |