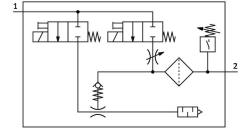


# Vacuum generator OVEM-10-H-B-Q0-CE-N-LK

Part number: 8037695

**FESTO**



## Data sheet

Feature	Value
Nominal size, Laval nozzle	0.95 mm
Grid dimension	20 mm
Silencer design	Open
Mounting position	optional
Ejector characteristic	High vacuum Standard
Grade of filtration	40 µm
Manual override	Non-detenting Additionally via operating buttons
Integrated function	Electric ejector pulse valve Flow control Electric on-off valve Filter Air saving function, electrical Check valve Open silencer Vacuum switch
Design	Modular
Short circuit current rating	yes
Valve function	Closed
Reverse polarity protection	For all electrical connections
Standard switching input	IEC 61131-2
Display type	4-place alphanumeric Back-lit LCD
Switching position indicator	LCD
Operating pressure	2 bar...8 bar
Operating pressure for max. vacuum	3.5 bar
Max. vacuum	93 %
Nominal operating pressure	6 bar
Max. suction flow rate against atmosphere	19.5 l/min
Air supply time at nominal operating pressure	0.2 s
Operational voltage range DC	20.4 V...27.6 V
Duty cycle	100%
Max. output current	100 mA

Feature	Value
Off-state current	0.1 mA
Characteristic coil data	24 V DC: low-current phase 0.3 W, high-current phase 2.55 W
Overload protection	Available
Approval	RCM trademark c UL us listed (OL)
KC mark	KC-EMV
CE mark (see declaration of conformity)	To EU EMC Directive
UKCA marking (see declaration of conformity)	To UK instructions for EMC
Operating medium	Compressed air to ISO 8573-1:2010 [7:4:4]
Note on operating and pilot medium	Lubricated operation not possible
Corrosion resistance class CRC	2 - Moderate corrosion stress
LABS (PWIS) conformity	VDMA24364 zone III
Media temperature	0 °C...50 °C
Relative air humidity	5 - 85 %
Sound pressure level at nominal operating pressure	73 dB(A)
Degree of protection	IP65
Ambient temperature	0 °C...50 °C
Max. tightening torque	0.8 Nm with female thread 2.5 Nm with through-hole
Product weight	330 g
Pressure measuring range	-1 bar...0 bar
Protocol	IO-Link®
IO-Link, Protocol version	Device V 1.1
IO-Link, Profile	Smart sensor profile
IO-Link, Function classes	Binary data channel (BDC) Process data variable (PDV) Identification Diagnostics Teach channel
IO-Link, communication mode	COM2 (38.4 kBaud)
IO-Link, Port class	A
IO-Link, Process data length OUT	1 bytes
IO-Link, Process data content OUT	1 bit (ejector pulse IN/OUT) 1 bit (vacuum ON/OFF)
IO-Link, Process data length IN	2 bytes
IO-Link, Process data content IN	14 bit PDV (pressure measurement value) 2 bit BDC (pressure monitoring)
IO-Link, Min. cycle time	3.5 ms
IO-Link, Data storage required	0.5 KB
IO-Link, Device ID	0x00003E
Electrical connection	5-pin M12x1 Plugs
Type of mounting	With through-hole Via female thread With accessories
Pneumatic connection, port 1	QS-8
Pneumatic connection, port 3	QS-8
Vacuum connection	QS-8
Note on materials	RoHS-compliant
Material seals	NBR
Material receiver nozzle	POM
Material filter	Fabric PA Sintered steel
Material housing	Die-cast aluminium PA-reinforced

Feature	Value
Material adjusting screw	Steel
Material silencer	Wrought aluminium alloy PU foam
Material screws	Steel
Material connector housing	Nickel-plated brass
Material pins	Steel
Material transmitter nozzle	Wrought aluminium alloy
Material fitting	Nickel-plated brass