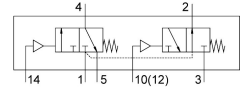


# Pneumatic valve VUWS-LT30-T32H-M-N38

Part number: 8036734

**FESTO**



## Data sheet

Feature	Value
Valve function	2x3/2-way, open/closed, monostable
Type of actuation	Pneumatic
Valve size	31 mm
Standard nominal flow rate (standardised to DIN 1343)	1600 l/min
pneumatic working port	3/8 NPT
Operating pressure	0.1 MPa...1 MPa 1 bar...10 bar
Design	Poppet seat
Type of reset	Mechanical spring
Approval	c UL us - Recognized (OL)
Nominal size	7.8 mm
Exhaust-air function	With flow control option
Sealing principle	Soft
Mounting position	optional
Manual override	None
Type of piloting	Direct
Pilot air supply	Internal
Flow direction	Non-reversible
lap	Underlap
Pilot pressure	0.25 MPa...1 MPa 2.5 bar...10 bar
Switching time off	45 ms
Switching time on	12 ms
Explosion protection	The information in the certificate must be observed! Zone 1 (ATEX) Zone 2 (ATEX) Zone 21 (ATEX) Zone 22 (ATEX)
Operating medium	Compressed air to ISO 8573-1:2010 [7:4:4]
Note on operating and pilot medium	Lubricated operation possible (in which case lubricated operation will always be required)
Corrosion resistance class CRC	2 - Moderate corrosion stress
LABS (PWIS) conformity	VDMA24364-B1/B2-L

Feature	Value
Cleanroom class	Class 6 according to ISO 14644-1
Media temperature	-10 °C...60 °C
Pilot medium	Compressed air to ISO 8573-1:2010 [7:4:4]
Ambient temperature	-10 °C...60 °C
Product weight	524 g
Type of mounting	On manifold rail With through-hole Either:
Breather connection	Not ducted
Pilot air port 10	1/8 NPT
Pilot air port 14	1/8 NPT
Pneumatic connection, port 1	3/8 NPT
Pneumatic connection, port 2	3/8 NPT
Pneumatic connection, port 3	3/8 NPT
Pneumatic connection, port 4	3/8 NPT
Pneumatic connection, port 5	3/8 NPT
Note on materials	RoHS-compliant
Material seals	HNBR NBR TPE-U(PU)
Material housing	Painted die cast aluminium
Material piston slide	POM
Material screws	Galvanised steel